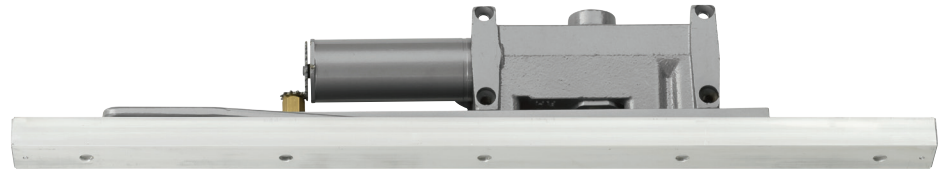


# 2210 Series



The concealed 2210 Series, heavy duty, high security track closer features complete concealment with special components to minimize tampering and vandalism. Forged steel, single lever arm and heavy steel mounting plate are designed for correctional, vandal prone, institutional, and other high traffic applications. A choice of finishes and cylinder functions meet correctional and vandal resistant requirements.

## Features

<b>Certifications</b>	Grade 1 - ANSI A156.4, UL 10C, 100 Hour Salt Spray, Meets BAA - Buy American Act	<b>Fasteners</b>	Torx Machine Screws (TORX)
<b>Body construction</b>	<ul style="list-style-type: none"> <li>Cast iron body</li> <li>Full complement bearing</li> <li>1 1/2" diameter piston</li> <li>1/8" diameter double heat treated pinion journal</li> </ul>	<b>Mounting</b>	<ul style="list-style-type: none"> <li>Concealed, single acting cylinder in head frame</li> <li>Concealed, arm and track in top rail of door</li> </ul>
<b>Fluid</b>	All weather fluid	<b>Arms</b>	Standard security arm and security track
<b>Handing</b>	Handed	<b>Finishes/colors/ powder coat</b>	<ul style="list-style-type: none"> <li>689 Aluminum</li> <li>690 Statuary Bronze</li> <li>691 Light Bronze</li> <li>693 Black</li> <li>695 Dark Bronze</li> <li>696 Brass</li> <li>Custom colors optional</li> <li>Optional SRI primer - powder coat only</li> <li>Optional plated finishes</li> </ul>
<b>Size</b>	Sized 3-5 (refer to chart); interior, exterior and vestibule		
<b>Warranty</b>	15 years (2210); 2 years (2210DPS)		
<b>Cover</b>	Two piece metal finish plates		

### Special templates

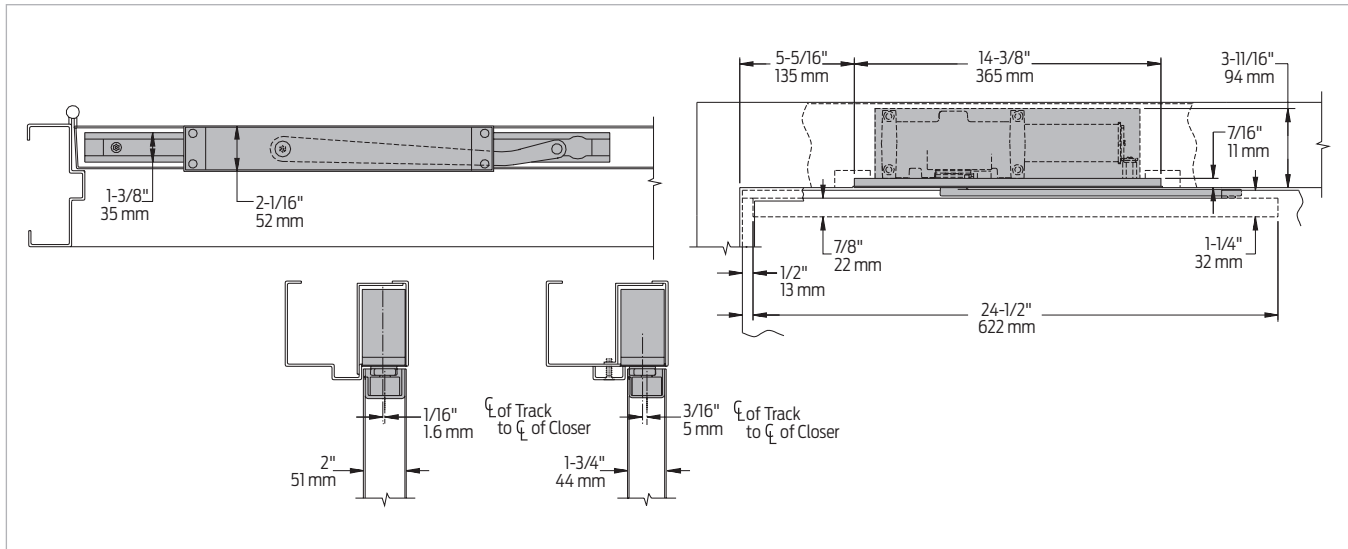
Customized installation templates or products may be available to solve non-standard applications. Contact LCN Product Support for assistance.

	Hinge (pull) side	Parallel arm (push)	Stop face	Concealed (frame)	Powder coat	Plated	Finish	Cover	Cylinder	Arm function*
2210	■	■	■	■	■	■	Plastic	Handed	180°	Standard (single)
2210DPS	■	■	■	■	■	■	Metal	Non-sized	180°	EDA

■ Available      ■ Not available  
 \* Maximum opening with standard template.  
 \*\* Advanced Variable Backcheck.

# Mounting details

## Concealed mounting

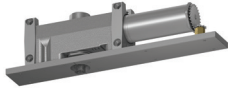


Butt hinges	Should not exceed 4 1/2" (114 mm) in width
Auxiliary stop	Recommended where a door cannot swing 180°
Top rail	1 1/4" (32 mm) mortise required; 3/8" (10 mm) cutout required at top of door, stop face only
Door thickness	1 3/4" (44 mm) minimum
Door width	28" (711 mm) minimum
Head frame	<ul style="list-style-type: none"> <li>5 3/4" (146 mm) wide and 4" (102 mm) high with 2 3/16" (56 mm) rabbet required</li> <li>Consult factory if any dimension is less</li> </ul>
Steel mounting plate	Thickness 3/8" (10 mm)
Door position switch	<ul style="list-style-type: none"> <li>Optional, field adjustable switch can interface with security and monitoring systems</li> <li>Add suffix "DPS" to selected cylinder</li> <li>Provides normally open (N.O.) and normally closed (N.C.) circuit</li> <li>A three wire connector harness with 84" (2134 mm), 16 AWG leads is furnished to simplify connection to field wiring</li> <li>Single pole double throw (SPDT) contacts rated at 125/250 VAC at 10.1 amps maximum resistive load are standard</li> </ul>
Advanced Variable Back Check	<ul style="list-style-type: none"> <li>Cylinder starts back check at approximately 45° instead of the normal 75°</li> <li>Add suffix "CYLAVB" to selected cylinder</li> </ul>
Maximum opening	<ul style="list-style-type: none"> <li>Templating allows 180°</li> <li>Consult factory if door will be held open at 180°</li> <li>Pivot mounting door limits opening to 110° and increases minimum door width to 32" (813 mm)</li> <li>Please note that many track style door closers are capable of allowing 180° of door swing</li> </ul>
Options	<ul style="list-style-type: none"> <li>Advanced Variable Back Check Cylinder (CYLAVB)</li> <li>Door Position Switch (DPS)</li> </ul>

Note: Track style closers are at their weakest closing force at 180°.

## Accessories

### Cylinders



**2213(4)(5)-3071**  
Cast iron cylinder assembly (CYL)

- Handed
- Cast iron
- Standard



**2213(4)(5)DPS-3071**  
Cast iron cylinder assembly (CYL)

- Handed
- Cast iron
- Assembly includes DPS wire harness and gear

### Arms



**2210-3077T**  
**2210DPS-3077T**  
Standard Security Arm (STDTRKSECARM)

- Handed
- Solid forged steel and large cross section for potentially abusive installations
- Special threaded attachment of track roller for extra security
- Double slab arm/pinion attachment for maximum strength
- Can only be used with high security track roller, 2210-3034 or 2210DPS-3034
- Roller is included with arm when either the 2210-3077T or 2210DPS-3077T are ordered separately

### Tracks



**2210-3038**  
**2210DPS-3038**  
Standard Security Track (STDSECTRK)

- Non-handed
- Hold open function not available
- Designed to eject foreign objects placed in track during either opening or closing motion
- Requires track roller, 2210-3034

### Installation accessories



**2210-11**  
Long Plate

- Heavy gauge metal plate
- Required for complete enclosure
- Six point Torx Mounting Screws for extra security
- Closer adjustments not accessible with finish plates installed



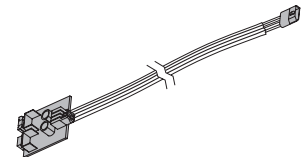
**2210-12**  
Short Plate

- Heavy gauge metal plate
- Required for complete enclosure
- Four point Torx Mounting Screws for extra security
- Closer adjustments not accessible with finish plates installed



**2210-3034**  
Security Track Roller

- Low friction track roller threads into 2210-3077T arm for extra strength and security
- Can not be removed without disconnecting arm from closer



**2210-493**  
Test Kit

- Battery operated designed to verify switch signal response point
- Can be used directly at door location (used for 2210DPS only)