

# HEALTHY HARDWARE® & HANDS-FREE SOLUTIONS

BY TRIMCO®

HELPING CREATE  
HEALTHIER BUILDINGS  
ONE DOOR AT A TIME.



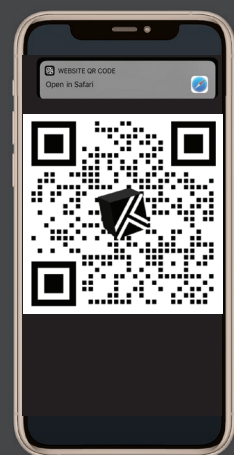
# TOC + QR CODE INSTRUCTIONS

- 04 STOREFRONTS + VESTIBULE DOORS
- 06 HOSPITAL PATIENT + ICU ROOMS
- 08 MULTI-USE RESTROOMS
- 10 PRIVATE RESTROOMS
- 12 OFFICE + CONFERENCE ROOMS
- 14 RETAIL + RECEPTIONS
- 16 SCHOOLS + RECREATION
- 18 ASSISTED LIVING + HOSPITALITY
- 20 EXITS + BACK DOORS
- 22 PRODUCT INDEX

THIS CATALOG INCLUDES CODES FOR EASY REFERENCE ON MOBILE DEVICES

## HOW TO SCAN QR CODES

1. Open your smartphone or camera.
2. Point your camera at the QR Code until the viewfinder recognizes the code and a link appears on your screen.
3. Click the link that appears on your screen and you will be directed to the webpage.



Scan in the QR Code shown here for an electronic version of this catalog.

# MISSION + WHY HEALTHY HARDWARE?

## OUR MISSION

We make a difference by innovating, designing, and manufacturing products that help make our world safer, healthier, more accessible, and fashionable.

## HEALTHY HARDWARE® FACTS

- Healthy Hardware®, manufactured from CuVerro® bactericidal copper alloy surfaces
- EPA registered and proven to kill 99.9% of infectious bacteria\* like e-Coli, MRSA and Staph
- Not a coating – WON'T wear off or diminish effectiveness over time
- When properly cleaned, Healthy Hardware kills bacteria 24/7 for the lifetime of the product
- Similar in appearance to satin stainless steel
- Manufactured in North America
- Available in a wide range of hardware and touch surfaces
- Most commonly used in Healthcare, Education, Offices, Hospitality, Commercial, and other high traffic public spaces

### \* EPA DISCLAIMER

\*Laboratory testing shows that, when cleaned regularly, CuVerro surfaces kill greater than 99.9% of the following bacteria within 2 hours of exposure: Methicillin-Resistant Staphylococcus aureus (MRSA), Staphylococcus aureus, Enterobacter aerogenes, Pseudomonas aeruginosa, E. coli O157:H7, and Vancomycin-Resistant Enterococcus faecalis (VRE).

The use of CuVerro® bactericidal copper products is a supplement to and not a substitute for standard infection control practices; users must continue to follow all current infection control practices, including those practices related to cleaning and disinfection of environmental surfaces. This surface has been shown to reduce microbial contamination, but it does not necessarily prevent cross contamination. CuVerro® is a registered trademark of Wieland North America, Inc. and is used with permission (TR-0002-1509). See [www.CuVerro.com](http://www.CuVerro.com) for more details.

# STOREFRONTS + VESTIBULES

HELP MINIMIZE THE  
RISK OF CONTAMINATION  
ON HIGH-TRAFFIC  
ENTRY DOORS.



**AP400 SERIES**  
ARCHITECTURAL  
LADDER PULLS



▶ **AP334 SERIES**  
HANDS-FREE BENT ADJUSTABLE PULLS



**AP330 SERIES**  
HANDS-FREE BENT  
ADJUSTABLE PULLS



**AP400 SERIES**  
ARCHITECTURAL  
LADDER PULLS

SEE MORE OPTIONS



**1191/1194 SERIES**  
STANDARD OFFSET  
AND STRAIGHT GRIPS



**1700 SERIES**  
PUSH/PULL BAR SETS



**PBT8000 SERIES**  
EXIT DEVICE  
PUSH BAR COVERS



**AP100 SERIES**  
ARCHITECTURAL  
STRAIGHT PULLS



**AP200 SERIES**  
ARCHITECTURAL  
OFFSET PULLS



**AP300 SERIES**  
ADJUSTABLE, AND  
CONFIGURABLE PULLS

# HOSPITAL PATIENT + ICU ROOMS

CREATE A HEALTHIER  
ENVIRONMENT FOR  
YOUR PATIENTS.



**9 SERIES**  
MORTISE LOCKS



▶ **1562 SERIES**  
PUSH/PULL LATCHES



**1562 SERIES**  
PUSH/PULL LATCHES



**9 SERIES**  
MORTISE LOCKS



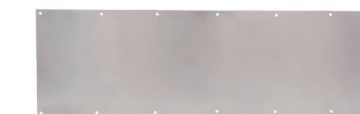
**PBT8000 SERIES**  
EXIT DEVICE  
PUSH BAR COVERS



**APC10 SERIES**  
CABINET PULLS



**562 SERIES**  
CABINET PULLS



**K SERIES**  
PROTECTION PLATES

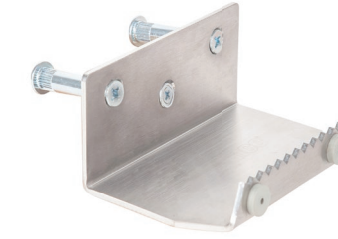
SEE MORE OPTIONS

# MULTI-USE RESTROOMS

REDUCE BACTERIA ON HIGH-RISK  
OPENINGS SUCH AS MULTI-USE  
AND PUBLIC RESTROOMS.

▶ **1035 SERIES**  
ULTIMATE  
RESTROOM PULLS

▶ **UFP SERIES**  
ULTIMATE FOOT PULLS



**UFP SERIES**  
HANDS-FREE  
ULTIMATE FOOT PULLS



**1035 SERIES**  
HANDS-FREE  
ULTIMATE RESTROOM PULLS



**1135 SERIES**  
HANDS-FREE  
ULTIMATE GRIPS



**1198 SERIES**  
ADA GRAB BARS



**1835 SERIES**  
HANDS-FREE  
ULTIMATE RESTROOM  
HEAVY-DUTY  
PUSH/PULL SET



**TIDAL SERIES**  
HANDS-FREE  
LOW TIDE  
ARM PULLS



**K SERIES**  
PROTECTION PLATES

SEE MORE OPTIONS

# PRIVATE RESTROOMS

HELP REDUCE THE TRANSMISSION OF BACTERIA ON PRIVATE BATHROOM TOUCH SURFACES.



**1198 SERIES**  
ADA GRAB BARS



▶ **TIDAL SERIES**  
ADA TIDAL SLIDE LOCKS



**TIDAL SERIES**  
HANDS-FREE  
ADA TIDAL SLIDE LOCKS



**9 SERIES**  
MORTISE LOCKS



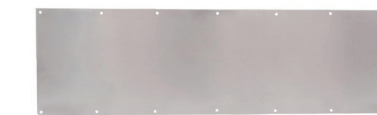
**1198 SERIES**  
ADA GRAB BARS



**APC10 SERIES**  
CABINET PULLS



**562 SERIES**  
CABINET PULLS



**K SERIES**  
PROTECTION PLATES

SEE MORE OPTIONS

# OFFICES + CONFERENCE ROOMS

HELP CREATE A HEALTHIER ENVIRONMENT FOR YOUR EMPLOYEES, VENDORS, AND CLIENTS.



► **FANTOM SERIES**  
MAGNETIC  
DOOR STOPS



**FANTOM SERIES**  
MAGNETIC DOOR STOPS



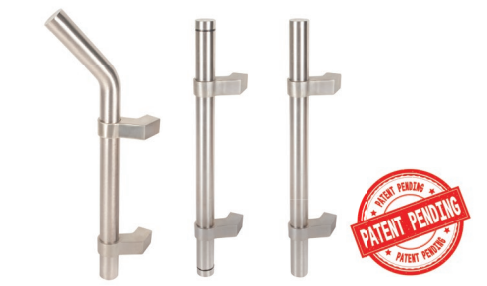
**9 SERIES**  
MORTISE LOCKS



**AP100 SERIES**  
ARCHITECTURAL  
STRAIGHT PULLS



**AP200 SERIES**  
ARCHITECTURAL  
OFFSET PULLS



**AP300 SERIES**  
HANDS-FREE BENT,  
ADJUSTABLE, AND  
CONFIGURABLE PULLS



**AP400 SERIES**  
ARCHITECTURAL  
LADDER PULLS

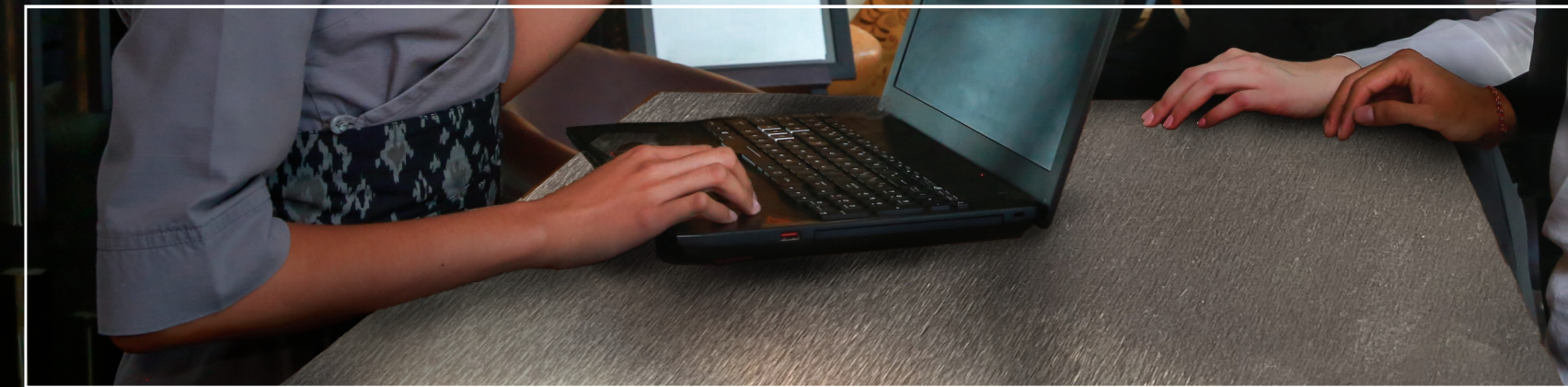


**APC10 SERIES**  
CABINET PULLS

SEE MORE OPTIONS

# RECEPTION + RETAIL

HELP MINIMIZE RISK OF  
BACTERIAL TRANSMISSION  
FOR YOUR EMPLOYEES  
AND CUSTOMERS.



► **UCT SERIES**  
ULTIMATE COUNTERTOPS



**UCT SERIES**  
ULTIMATE COUNTERTOPS



**FANTOM SERIES**  
MAGNETIC DOOR STOPS



**APC10 SERIES**  
CABINET PULLS



**562 SERIES**  
CABINET PULLS

SEE MORE OPTIONS



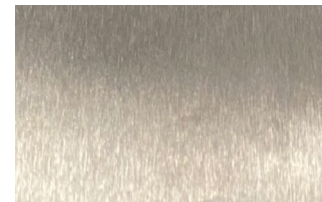
# SCHOOLS + RECREATION



► **9 SERIES**  
MORTISE LOCKS



**9 SERIES**  
MORTISE LOCKS



**UCT SERIES**  
ULTIMATE COUNTERTOPS



**LDH100 SERIES**  
LOCKDOWN HARDWARE®



**PBT8000 SERIES**  
EXIT DEVICE  
PUSH BAR COVERS



**APC10 SERIES**  
CABINET PULLS



**K SERIES**  
PROTECTION PLATES



**562 SERIES**  
CABINET PULLS

SEE MORE OPTIONS

# ASSISTED LIVING + HOSPITALITY

▶ **APC10 SERIES**  
CABINET PULLS

▶ **1069 SERIES**  
ADA POCKET  
DOOR PULLS

WELCOME GUESTS  
TO YOUR FACILITY  
WITH A HEALTHIER  
ENVIRONMENT.



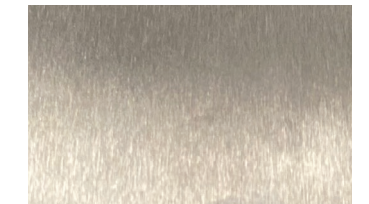
**1069 SERIES**  
ADA POCKET DOOR PULLS



**FANTOM SERIES**  
MAGNETIC DOOR STOPS



**9 SERIES**  
MORTISE LOCKS



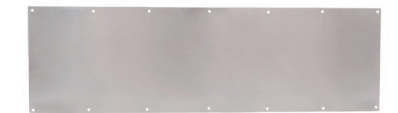
**UCT SERIES**  
ULTIMATE COUNTERTOPS



**APC10 SERIES**  
CABINET PULLS



**562 SERIES**  
CABINET PULLS



**K SERIES**  
PROTECTION PLATES

SEE MORE OPTIONS

# EXITS + BACKDOORS

EXIT DEVICES?  
WE'VE GOT YOU  
COVERED WITH THE  
PBT8000 SERIES.



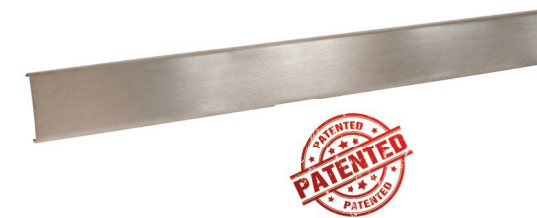
▶ **9 SERIES**  
MORTISE  
LOCKS



▶ **PBT8000 SERIES**  
EXIT DEVICE  
PUSH BAR COVERS

EXIT

SEE MORE OPTIONS



**PBT8000 SERIES**  
EXIT DEVICE  
PUSH BAR COVERS



**1096 & 1097 SERIES**  
ANTI-VANDAL PULLS



**9 SERIES**  
MORTISE LOCKS



**LDH100 SERIES**  
LOCKDOWN HARDWARE®



**K SERIES**  
PROTECTION PLATES

# PRODUCT INDEX

## AP100 SERIES ARCHITECTURAL STRAIGHT PULLS



- Available with Healthy Hardware® Copper Nickel alloy touch surfaces
- Wide array of material sizes and dimensions
- Manufactured from stainless steel, bronze, brass and aluminum
- Large range of center-to-center dimensions: 8" to 48"
- Material options include 3/4" round, 1" dia. and 1-1/4" dia.
- ADA Compliant



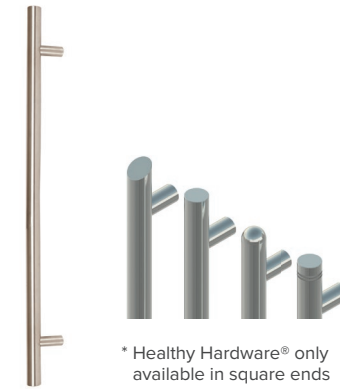
## AP200 SERIES ARCHITECTURAL OFFSET PULLS



- Available with Healthy Hardware® Copper Nickel alloy touch surfaces
- Wide array of material sizes and dimensions
- Manufactured from stainless steel, bronze, brass and aluminum
- Large range of center-to-center dimensions: 8" to 48"
- Material options include 3/4", 1", and 1-1/4" dia.
- ADA Compliant



## AP400 SERIES ARCHITECTURAL LADDER PULLS



\* Healthy Hardware® only available in square ends

- Available with Healthy Hardware® Copper Nickel alloy touch surfaces
- Manufactured from stainless steel, bronze, brass or aluminum
- Flexibility in design from straight or offset pulls to square, radius, angled, or groove ends\*
- Wide range of lengths available from 12" to over 9'
- Available in most architectural finishes
- Multiple mounting options for metal, wood and glass doors
- ADA Compliant



## FANTOM SERIES MAGNETIC DOOR STOPS



- Architecturally pleasing design with minimum hardware visible
- Hold-open device with a rare earth magnet
- Flush mounted mechanical door stop
- No trip hazard
- Streamlined modern finish
- Suitable for single and double leaf doors



## AP300 SERIES ADJUSTABLE & CONFIGURABLE PULLS



- Available with Healthy Hardware® Copper Nickel alloy touch surfaces
- Adjustable and configurable standoffs are versatile for use across many different center-to-center configurations
- Configurable and customizable end caps are available in multiple sizes and finishes
- ADA Compliant



## AP330 SERIES HANDS-FREE BENT ADJUSTABLE PULLS



- Hands-Free Pull
- Available with Healthy Hardware® Copper Nickel alloy touch surfaces
- Adjustable and configurable standoffs are versatile for use across many different center-to-center configurations
- Simple replacement for current pulls
- ADA Compliant



## PBT8000 SERIES EXIT DEVICE PUSH BAR COVERS



- Made with Healthy Hardware® Copper Nickel alloy touch surfaces
- No hardware required for installation
- Not a coating – does not wear off
- For 36" and 48" Von Duprin Exit Devices
- For 2'6", 3', and 4' Precision APEX 2000 Devices
- Custom lengths available



## TIDAL SERIES HANDS-FREE ARM PULLS



- Hands-Free Solution
- Available with Healthy Hardware® Copper Nickel alloy touch surfaces
- Slide Lock with interior and exterior indicators
- Extra Heavy-Duty construction for high-abuse applications
- ADA Compliant



# PRODUCT INDEX CONT.

## UCT SERIES ULTIMATE COUNTERTOPS



- Healthy Hardware® – Proven to kill 99.9% of infectious bacteria\* in 2 hours or less
- Not a coating and won't wear off
- Kills bacteria\* 24/7 for the lifetime of the product
- Help protect clients and employees from transmittal of harmful bacteria
- Manufactured with bactericidal copper alloy touch surfaces
- Available as configurable desk pads or custom engineered solutions



## UFP SERIES ULTIMATE FOOT PULLS



- Available with Healthy Hardware® Copper Nickel alloy touch surfaces
- Allows opening without use of hands
- Thru-bolted for maximum durability
- Includes 2 sexed bolts and 3 combo screws
- Two rubber bumpers for wall protection
- Made of marine grade stainless steel material or Healthy Hardware®
- Inquire for availability of other finishes
- Rubber bumpers for wall protection



## 1035 SERIES HANDS-FREE ULTIMATE PULLS



- Hands-Free Pull
- Available with Healthy Hardware® Copper Nickel alloy touch surfaces
- Manufactured in North America from stainless steel, bronze or brass for maximum durability
- Utilizes 1135 Ultimate Grip
- .050" Thick Pull Plate
- 3 Plate sizes available
- Custom sizes available
- Can be mounted up or down
- ADA Compliant



## 1135 SERIES HANDS-FREE ULTIMATE GRIPS



- Healthy Hardware - Proven to kill 99.9% of infectious bacteria\*
- Hands-Free Pull
- Extremely durable 2-point attachment method
- Can be mounted up or down
- Back-to-Back mounting available
- 6" Center-to-Center
- Available with bactericidal copper alloy or stainless steel
- ADA compliant



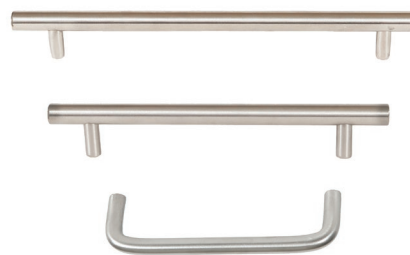
## 9 SERIES MORTISE LOCK LEVER SETS



- Healthy Hardware® – Proven to kill 99.9% of infectious bacteria\* in 2 hours or less
- Not a coating and won't wear off
- Kills bacteria\* 24/7 for the lifetime of the product
- Looks like stainless steel to match other hardware products
- Multiple functions available and can pair with many mortise lock manufacturers
- Manufactured in North America
- ADA compliant levers and thumbturn
- California Fire Marshall compliant options



## APC10 & 562 SERIES CLOSET & CABINET PULLS



- Available with Healthy Hardware® Copper Nickel alloy touch surfaces
- Manufactured from stainless steel, bronze, brass, or aluminum for long lasting durability
- Flexibility in design
- Wide range of lengths available
- Multiple mounting options for metal, wood, and glass doors



## 1835 SERIES ULTIMATE HEAVY-DUTY PUSH/PULL SETS



- Hands-Free Pull
- Available with Healthy Hardware® Copper Nickel alloy touch surfaces
- Can be mounted up or down
- Utilizes 1135 Ultimate Grip
- 1/8" Thick Push/Pull Plate Set
- 2 Plate sizes available
- Custom sizes available
- Standard finishes available
- ADA Compliant



## 1700 SERIES PUSH/PULL BAR SETS



- Available with Healthy Hardware® Copper Nickel alloy touch surfaces
- Manufactured in the North America from stainless steel, bronze or brass
- Options include 3/4", 1" and 1-1/4" diameter material and 10", 12" or 18" pulls
- Multiple mounting options for metal, wood and glass doors
- Must specify CTC on Push Bars
- Custom sizes and finishes also available



# PRODUCT INDEX CONT.

## 1191 SERIES OFFSET GRIPS



- Available with Healthy Hardware® Copper Nickel alloy touch surfaces
- Wide array of material sizes and dimensions to meet any design specification
- Manufactured from stainless steel, bronze, brass and aluminum
- Large range of center-to-center dimensions: 8" to 18"
- Material options 3/4", 1", to 1-1/4" dia.



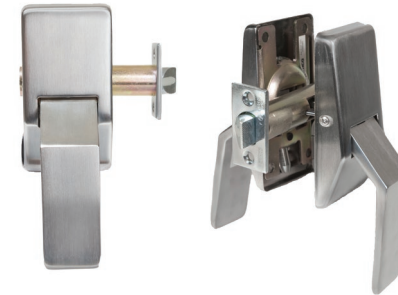
## 1194 SERIES STRAIGHT GRIPS



- Available with Healthy Hardware® Copper Nickel alloy touch surfaces
- Wide array of material sizes and dimensions to meet any design specification
- Manufactured from stainless steel, bronze, brass and aluminum for durability and long life
- Large range of center-to-center dimensions: 6" to 18"
- Material options include 1/2" dia. to 1-1/4" dia. round, 3/4 round, and half-round stock



## 1562 SERIES HOSPITAL LATCHES



- Healthy Hardware® – Proven to kill 99.9% of infectious bacteria\* in 2 hours or less
- Lever pads and latch covers manufactured from bronze, brass or antimicrobial copper material are suitable for heavy-duty use
- A nylon insert in the latchbolt face provides silent latch action
- Compact - less than 50% the projection of other Push/Pull latches
- ADA Compliant



## 1096 & 1097 SERIES ANTI-VANDAL PULLS



- Mated to Exit Devices or Mortise Locks
- Available in Healthy Hardware®
- Manufactured from 1/8" type 316 marine grade stainless steel, brass or bronze.
- Available with Astragal (1096) or without (1097)
- Offered with or without cylinder prep
- Eliminates potential for illegal chaining of doors
- ADA Compliant
- Meets California State Prison strength tests



## 1198 SERIES ADA GRAB BARS



- Available with Healthy Hardware® Copper Nickel alloy touch surfaces
- 1-1/4" diameter grab bars
- Multiple sizes ranging from 12" to 48"
- Concealed mounting



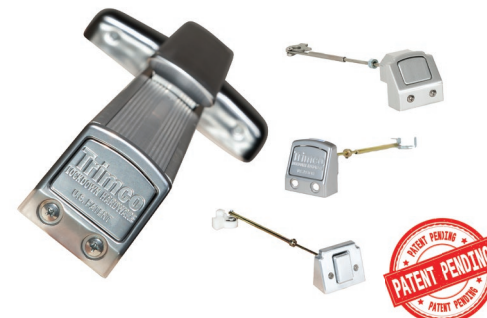
## 1001 SERIES HEAVY-DUTY PUSH PLATES



- Available with Healthy Hardware® Copper Nickel alloy touch surfaces
- Manufactured in the United States
- Heavy-Duty .050" stainless steel, brass, bronze or aluminum material
- 1/8" plastic option also available
- Standard sizes 3"x12", 3-1/2"x15", 4"x16", 6"x16" and 8"x16"
- Custom sizes also available
- Pencil beveled on all four sides



## LDH100 SERIES LOCKDOWN HARDWARE®



- Simple, one-touch mechanical lockdown for exit devices
- Cost-effective, aftermarket or new construction solution
- Does not require a key or hex-wrench to lock down doors
- Durable die-cast construction
- Easy installation requires no special tools or removal of the panic device from the door
- Works with hex or cylinder dogging devices
- ADA compliant



## K SERIES ARMOR & KICK PROTECTION PLATES



- Manufactured in the United States
- Available in Healthy Hardware®
- Heavy-Duty .050" stainless steel, brass, bronze or aluminum material standard
- Other materials including .038", .062", .125" and custom options available
- Pencil beveled on all four sides standard
- Options include UL labeling, heavy bevel, countersinking and security screws
- Custom cutouts, sizes and shapes available



### LEGEND





FOR MORE INFORMATION ABOUT TRIMCO PRODUCTS,  
PLEASE CONTACT TRIMCO'S CUSTOMER SERVICE TEAM.

**HEADQUARTERS**

1351 Rocky Point Drive  
Oceanside, CA 92056

**CUSTOMER SERVICE + ORDERS**

[csr@trimcohardware.com](mailto:csr@trimcohardware.com)

323.262.4191 Phone  
800.637.8746 Fax  
323.264.7214 Local Fax

**QUOTATIONS**

[quotes@trimcohardware.com](mailto:quotes@trimcohardware.com)

877.786.8387 Toll Free Fax  
323.264.7214 Local Fax

**LITERATURE + CATALOGS**

[marketing@trimcohardware.com](mailto:marketing@trimcohardware.com)

**HOURS OF OPERATION**

Customer Service  
6:30am - 4:00pm Pacific Time

**SALES**

Visit our website to find your local Trimco sales representative.



[linkedin.com/company/trimco](https://www.linkedin.com/company/trimco)



Trimco Hardware

