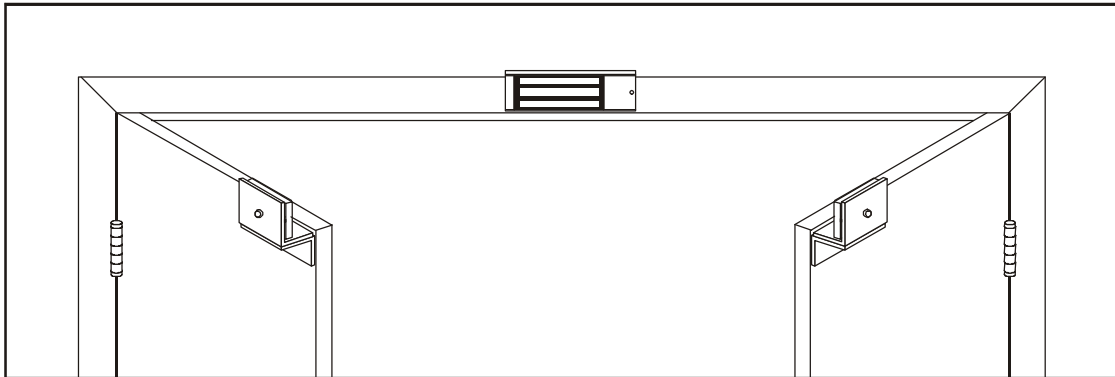


### INSTALLATION DESCRIPTION

The Series 2012xTJ21 / 3001LCxTJ21 is a 550 pound holding force top jamb-mounted electromagnetic lock designed to secure a double-inswinging pair of doors. The lock requires both installation procedures as described herein and in the separate wiring instructions included.

Typical installations of the lock on double-inswing doors:



### HANDLING

Care must be taken that the lock face and armature face are kept free of dirt, rust, paint, or any other obstruction which may interfere with the lock and armature making good contact. These faces may be cleaned with a non-abrasive pad and wiped with an oil dampened cloth.

### MECHANICAL INSTALLATION

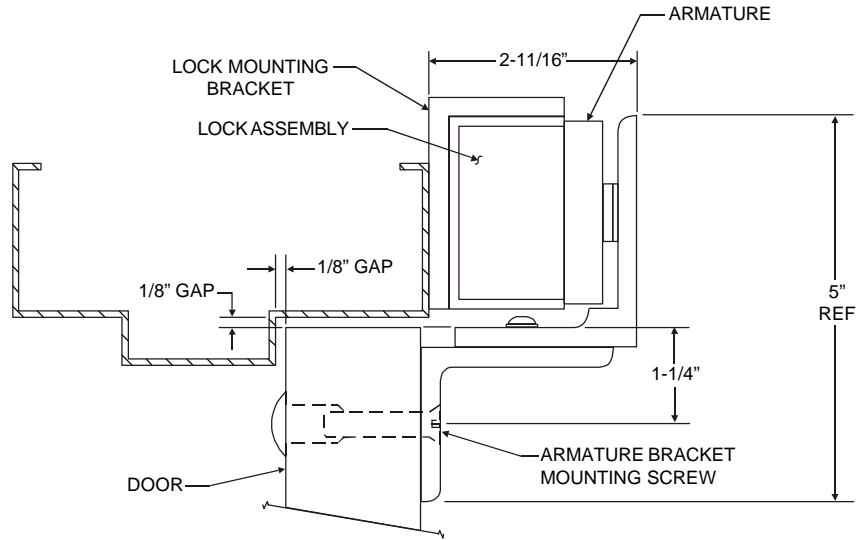
Familiarize yourself with the door and frame conditions. The lock must mount rigidly to the face of the door frame header. The door mounted armature is supplied with an adjustable mounting bracket and hardware that allows it to pivot slightly to compensate for reasonable misalignment.

### ELECTRICAL INSTALLATION

After mechanical installation is complete the lock needs to be wired to a 12 or 24 VDC/VAC power source. Once low voltage power is supplied the unit is fully operational. All other wiring is for selected options. Refer to the separate wiring instructions included for further information.

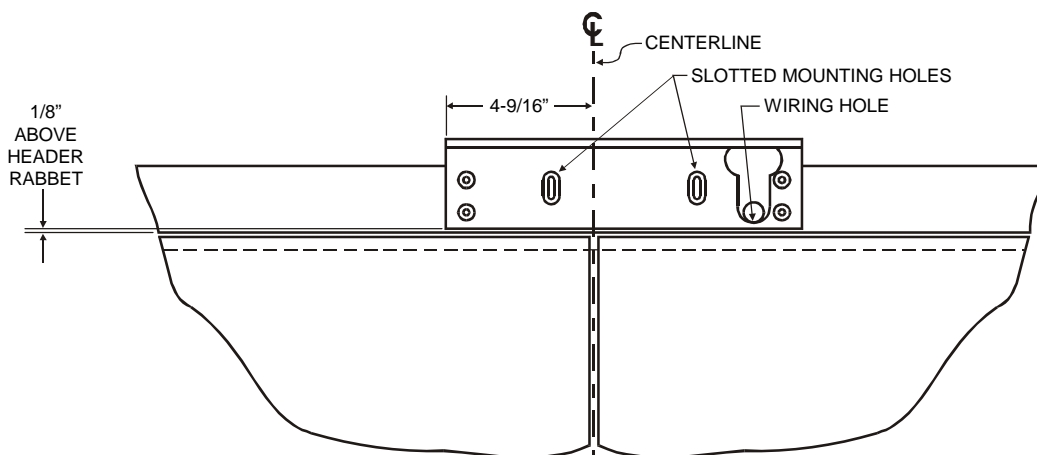
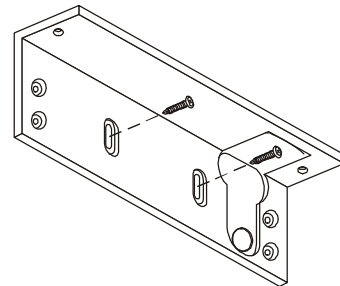
### MOUNTING CONSIDERATIONS

1. Individual door and frame conditions may vary. Dimensions shown at right are for a typical hollow metal door and frame.
2. The lock assembly should be mounted to the center of the frame header for maximum performance. Verify that there is proper clearance for the lock assembly at the planned mounting location.
3. Electrical wiring for the lock must be routed through the back of the unit, through a hole drilled in the face of the frame header.



### INSTALL THE LOCK MOUNTING BRACKET

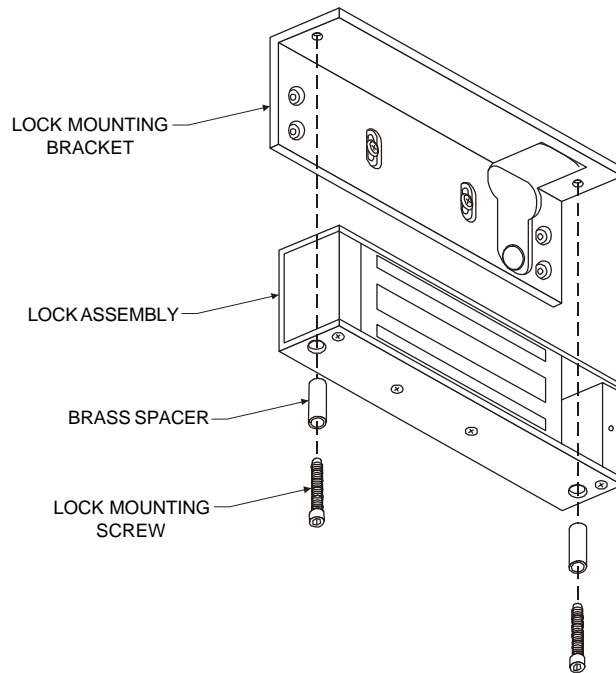
1. Standing at the "pull" side of the opening position the lock mounting bracket on the face of the frame header exactly as shown below. Locate and mark the centers of the two slotted mounting holes and the wiring hole.
2. Drill the marked holes in the face of the frame header:
  - a. Two (2) 1/8" dia. slotted mounting holes, 1" deep.
  - b. One (1) 5/8" dia. wiring hole.
3. Attach the lock mounting bracket to the frame header using two (2) #10 x 1" pan head Tek screws. Temporarily tighten the screws.



### ATTACH THE LOCK ASSEMBLY TO THE LOCK MOUNTING BRACKET

Using the two lock mounting screws and brass spacers attach the lock assembly to the lock mounting bracket as shown. The lock assembly will need to be removed later to add the remaining bracket mounting screws, after all hardware adjustments have been made.

Firmly tighten the mounting screws with a 3/16" hex wrench.

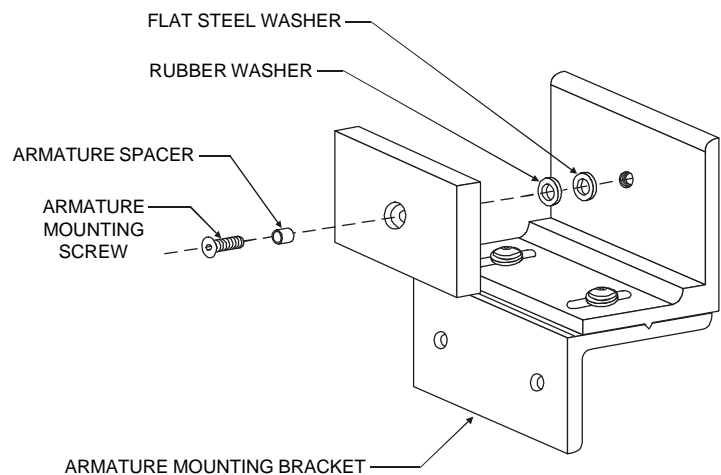


### ATTACH THE ARMATURES TO THE ARMATURE MOUNTING BRACKETS

Assemble the armature mounting brackets referencing the exploded parts view on page 7.

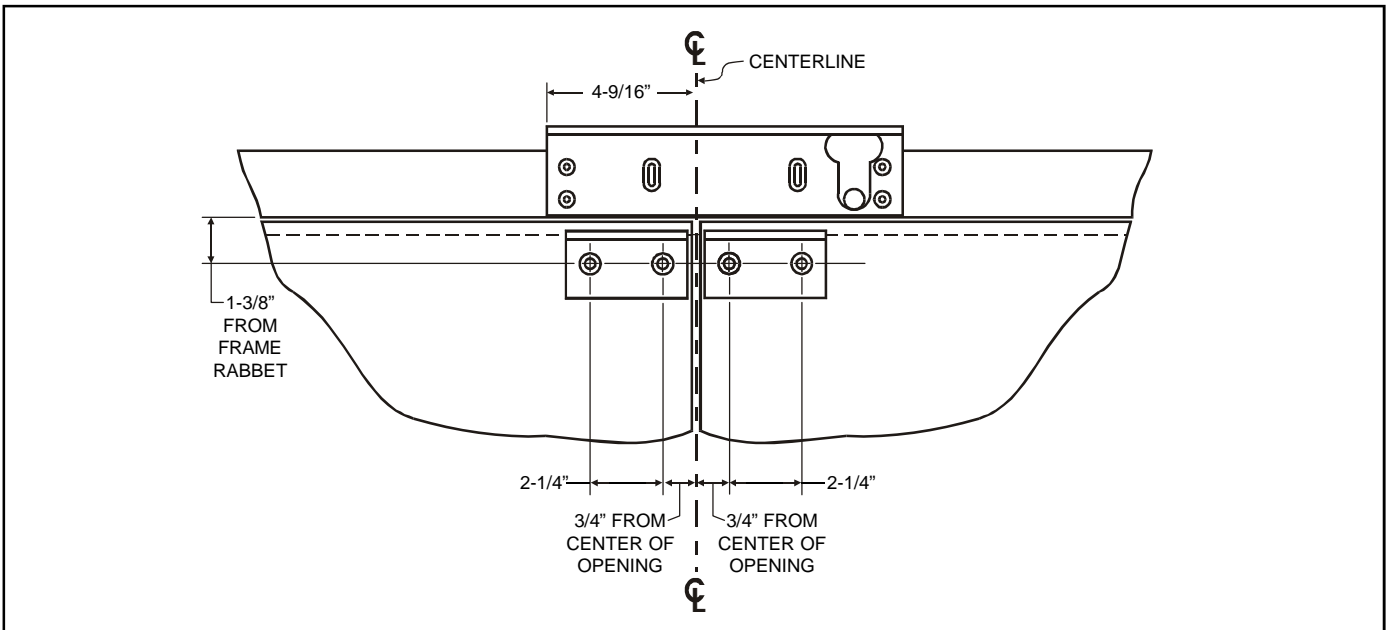
Locate the armature mounting hardware from the hardware kit and attach the armatures to the armature mounting bracket as shown. Firmly tighten the mounting screws with a 3/16" hex wrench.

**Failure to properly secure the armatures to the brackets could result in serious injury or possible security breach.**



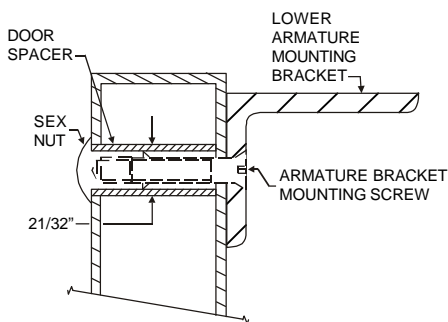
### INSTALL THE ARMATURE MOUNTING BRACKETS

- Use the figure below to identify and mark the locations of the armature mounting bracket screw holes on each door leaf. Refer to door and frame prep drawing #301090 for further information.



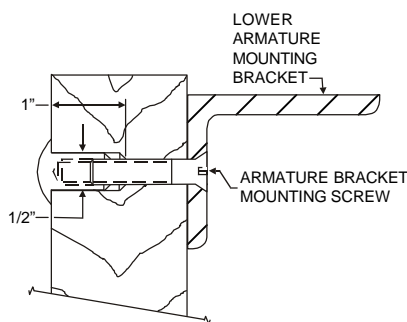
- From the illustrations below select the one that resembles your door type and follow the instructions for drilling the two (2) armature mounting bracket screw holes on each door leaf.

#### GLASS & ALUMINUM OR HOLLOW METAL DOOR



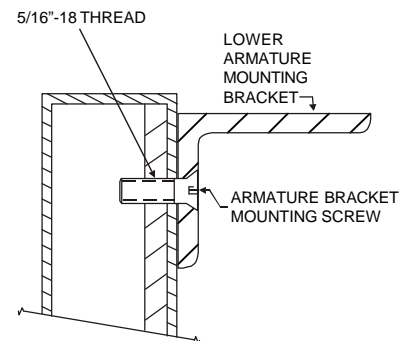
Drill an 11/32" diameter hole through door. From sex nut side only enlarge the 11/32" hole to 21/32" diameter.

#### SOLID CORE DOOR



Drill an 11/32" diameter hole through door. From sex nut side only drill 1/2" diameter hole to 1" depth.

#### REINFORCED DOOR



Drill an 11/64" diameter hole and tap for 5/16"-18 thread.

- Mount the armature and mounting bracket assemblies to each door leaf using the appropriate hardware for your door type. Firmly tighten the mounting screws with a 3/16" hex wrench.

### ARMATURE AND LOCK ADJUSTMENT

#### ARMATURE ADJUSTMENT

1. Using a 5/32" hex wrench temporarily loosen the armature bracket assembly screws roughly 1-1/2 turns to allow the upper armature bracket to move in and out freely (Ref. Figure "A").
2. Close and latch the door. The mating surfaces of the lock and armatures should fully contact each other. If necessary slide each armature in or out to ensure full contact is made with the lock while still allowing the door to properly close and latch.
3. When the desired adjustment is achieved slowly open each door, taking care to maintain the position of the armature. Firmly tighten the armature bracket assembly screws with a 5/32" hex wrench, making sure that the locking ribs on the upper and lower bracket halves properly mesh (Ref. Figure "A").

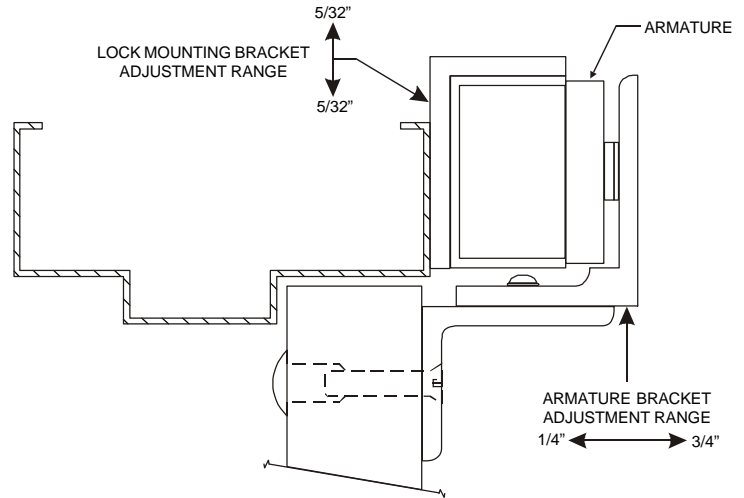
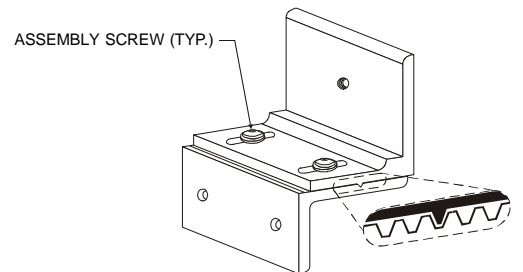


Figure "A"



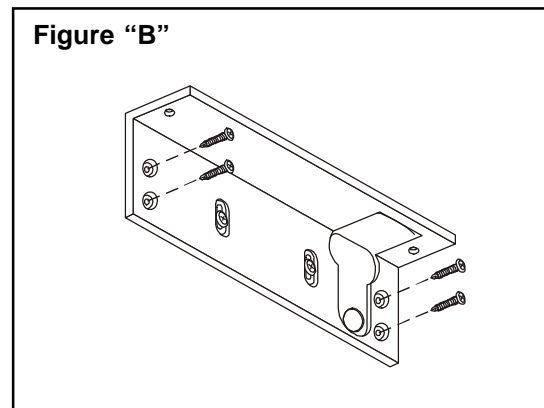
#### LOCK ADJUSTMENT

1. Verify that the lock face squarely aligns with the armature faces. To adjust the lock vertically, remove the lock assembly from the lock mounting bracket, loosen the two adjustment slot screws and re-position the bracket accordingly.

### LOCK MOUNTING BRACKET FINAL ASSEMBLY

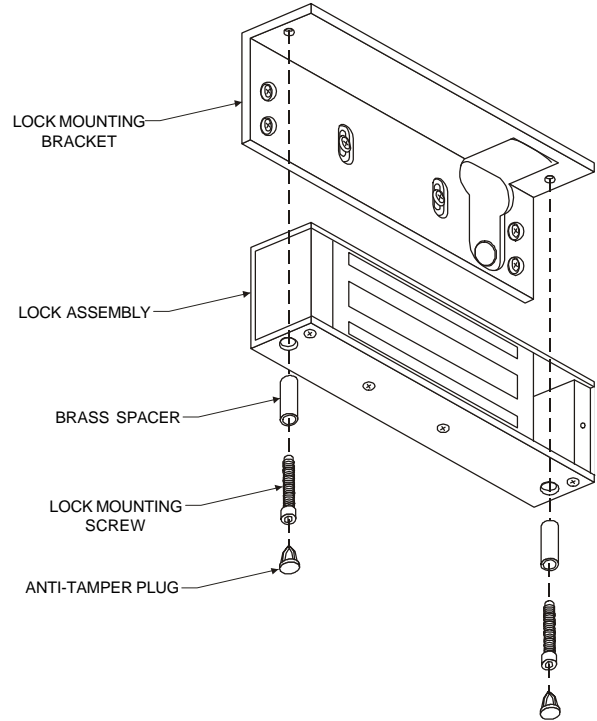
1. Following adjustment (if required) firmly re-tighten the adjustment slot screws on the lock mounting bracket. Using the bracket as a physical template mark the centers of the four fixed mounting screw holes. Drill the holes in the header using a 1/8" drill, 1" deep.
2. Complete the installation of the lock mounting bracket using four (4) #10 x 1 pan head Tek screws (Ref. Figure "B"). Firmly tighten all screws with a #2 phillips head screwdriver.

Figure "B"



### SECURE THE LOCK ASSEMBLY TO THE LOCK MOUNTING BRACKET

1. Secure the lock assembly to the mounting bracket using the two lock mounting screws and brass spacers. Firmly tighten the the mounting screws with a 3/16" hex wrench.
2. Install the anti-tamper plugs from the hardware kit over the lock mounting crews. Gently tap into place using a rubber mallet.
3. The mechanical installation is now complete. Refer to the separate 2000/3000/300LC Wiring Instructions to complete the electrical installation.



### EXPLODED PARTS VIEW LEGEND

ITEM	DESCRIPTION	PART NO.
1	Lock Assembly	Consult Factory
2	Lock Mounting Bracket	301073
3	Armature	300013
4	Upper Armature Bracket	300783
5	Lower Armature Bracket	300782
6	Access Cover / Board Assy.	300906
7	Access Cover Screw	300608
8	Brass Spacer	300468
9	Lock Mounting Screw	300603

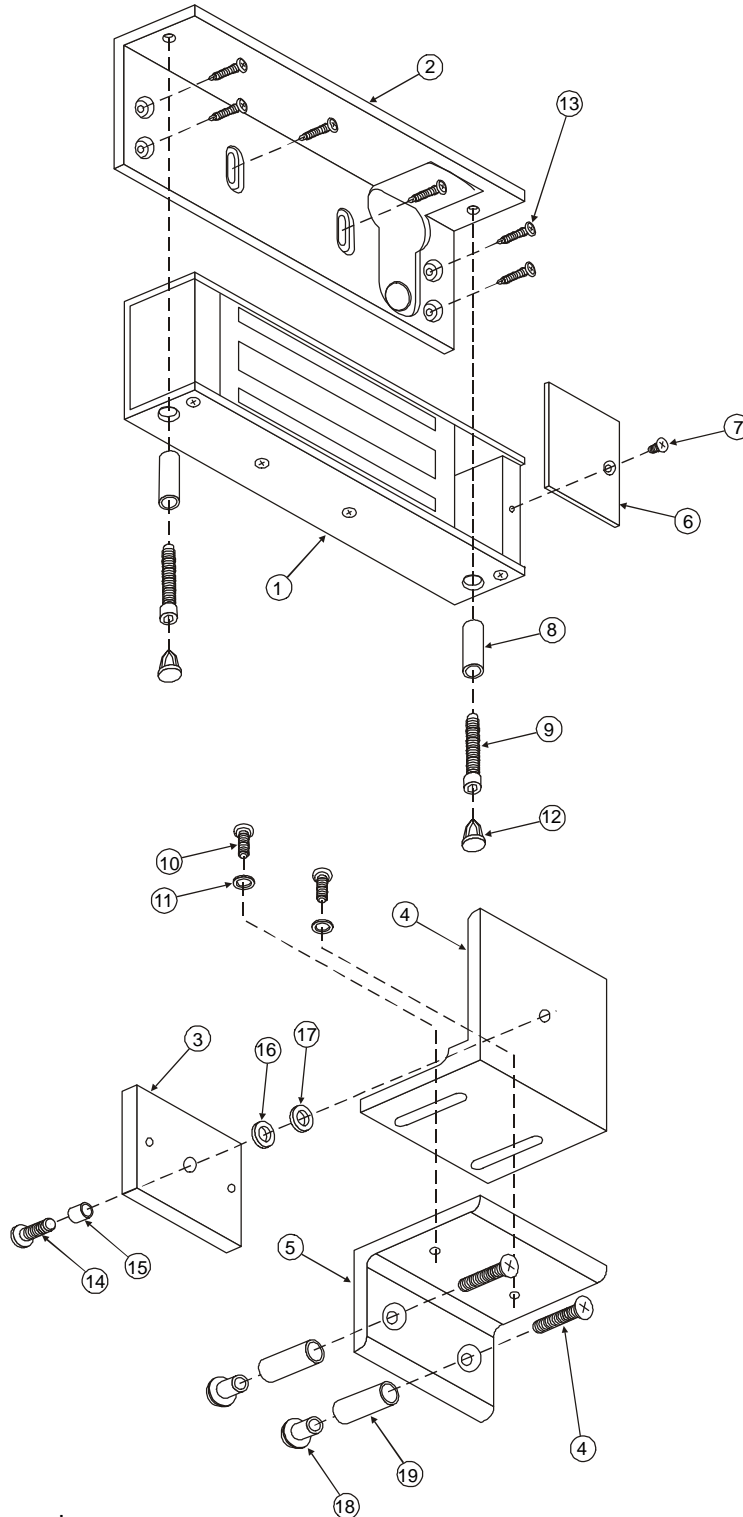
ITEM	DESCRIPTION	PART NO.
10	Armature Bracket Assy. Screw	Hardware Kit P/N 301092
11	Lock Washer	
12	Anti-Tamper Plug	
13	Lock Bracket Mounting Screw	
14	Armature Mounting Screw	
15	Armature Spacer	
16	Rubber Washer	
17	Flat Steel Washer	
18	Sex Nut	
19	Door Spacer	
20	Armature Bracket Mtg. Screw	

Note: Refer to Page 7 for parts locations.

### EXPLODED PARTS VIEW

**LOCK  
ASSEMBLY**

**ARMATURE  
ASSEMBLY  
(TYPICAL)**



Note: Refer to Page 6 for parts legend.

**FOR PRODUCT SUPPORT AND PARTS  
ORDERING INFORMATION CONTACT:**

DynaLock Corp.  
705 Emmett Street  
Bristol, CT 06010  
Bus: (877) 396-2562 Toll-Free  
(860) 582-4761  
Fax: (860) 585-0338

**DYNALOCK ON THE INTERNET:**

E-mail: [info@dynalock.com](mailto:info@dynalock.com)  
Website: [www.dynalock.com](http://www.dynalock.com)