

COORDINATORS SERIES

PART #	DOOR FRAME OPENING	COORDINATOR SIZE	FILLER BAR SIZE	ANSI A156.3	MATERIAL
2011	52" or less	1 5/8" x 32"	1 5/8" x 25"	Type 21	Aluminum
2012	52 1/16" to 56"	1 5/8" x 32"	1 5/8" x 32"	Type 21	Aluminum
2021	56 1/16" to 72"	1 5/8" x 52"	1 5/8" x 20"	Type 21	Aluminum
2022	72 1/16" to 84"	1 5/8" x 52"	1 5/8" x 32"	Type 21	Aluminum
2023	84 1/16" to 96"	1 5/8" x 52"	1 5/8" x 44"	Type 21	Aluminum
2033	96 1/16" to 104"	1 5/8" x 60"	1 5/8" x 44"	Type 21	Aluminum
over 104"		Call Factory			



SHELF PACK: 1

Box Pack

FASTENERS: 8 ea. #12-24 x 1 1/4" MS, 6 ea. #8 x 3/4" Combo Screw

FEATURES:

- For use on pair of doors when one door must close before the other
- Safety override allows active door to close first when extreme force applied
- Filler bar available when coordinator does not fill entire length of opening
- Mounting brackets available when stop mounted hardware used

FINISH: 628 (2021 also available in Dark Brown DB)

UNIVERSAL COORDINATOR



2040

NUMBER	SIZE	ANSI A156.3	MATERIAL
2040	20 1/4" x 1 5/8"	Type 21	Steel

SHELF PACK: 1

Box Pack

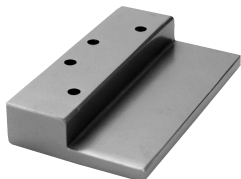
FASTENERS: 6 ea. #10-32 x 1 1/2" MS, 6 ea. #10 x 1 3/4" SMS

FEATURES:

- One size for all pairs of doors up to 8' wide
- Non-handed
- Stop mounted
- Meets ANSI 156.3, Type 21 requirements (when used with carry bar)
- Mounting brackets not required when using stop mounted hardware

FINISH: 622

MOUNTING BRACKETS



2050



2051

NUMBER	STOP WIDTH	SIZE	MATERIAL
2050	over 2 1/2"	5" x 3"	Aluminum
2051	under 2 1/2"	5" x 3 1/4"	Aluminum

SHELF PACK: 1

Box Pack

FASTENERS: (2050) 4 ea. #10-32 X 1 1/2" M/S

(2051) 6 ea. #10-32 X 1 1/2" M/S

FEATURES:

- For stop mounted hardware
- Ready to paint aluminum, plated finishes available

FINISH: 628