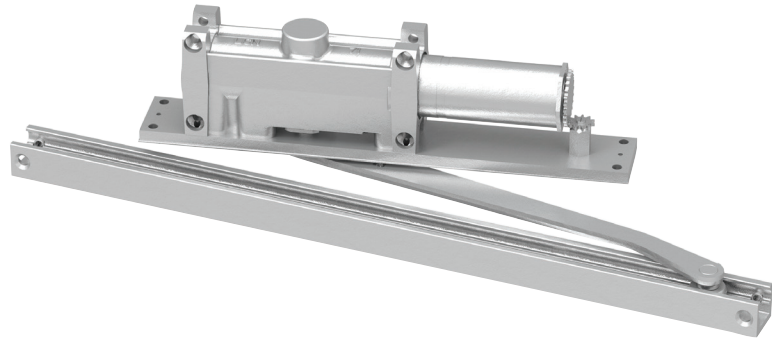


2010 Series



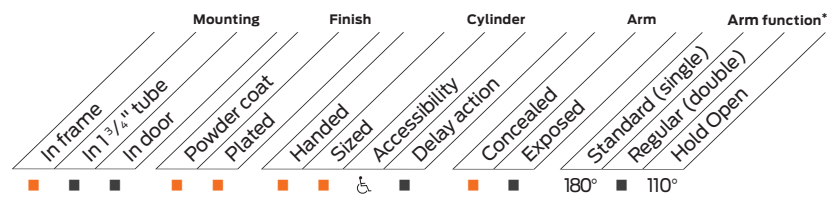
The concealed 2010 Series is a heavy duty closer designed to provide complete concealment. The single lever arm and roller assembly provide smooth, quiet door control and the choice of finishes and track functions meet virtually all architectural requirements.

Features

Certifications	Grade 1 - ANSI A156.4, UL 10 C, ADA, 100 hour salt spray, meets BAA - Buy American Act	Fasteners	Wood and Machine Screws (WMS)
Body construction	<ul style="list-style-type: none"> Cast iron body Full complement bearing 1 1/2" diameter piston 1/16" diameter double heat treated pinion journal 	Mounting	Concealed (in frame); aluminum frame requires minimum 4" x 4" (102 mm) tube
Fluid	All weather fluid	Arms	Standard Arm And Track
Handing	Handed	Finishes/colors/ powder coat	<ul style="list-style-type: none"> 689 Aluminum 690 Statuary Bronze 691 Light Bronze 693 Black 695 Dark Bronze 696 Brass Custom colors optional
Size	Sized 1-6		<ul style="list-style-type: none"> Optional SRI primer - powder coat only Optional plated finishes
Warranty	15 years		

Special templates

Customized installation templates or products may be available to solve non-standard applications. Contact LCN Product Support for assistance.



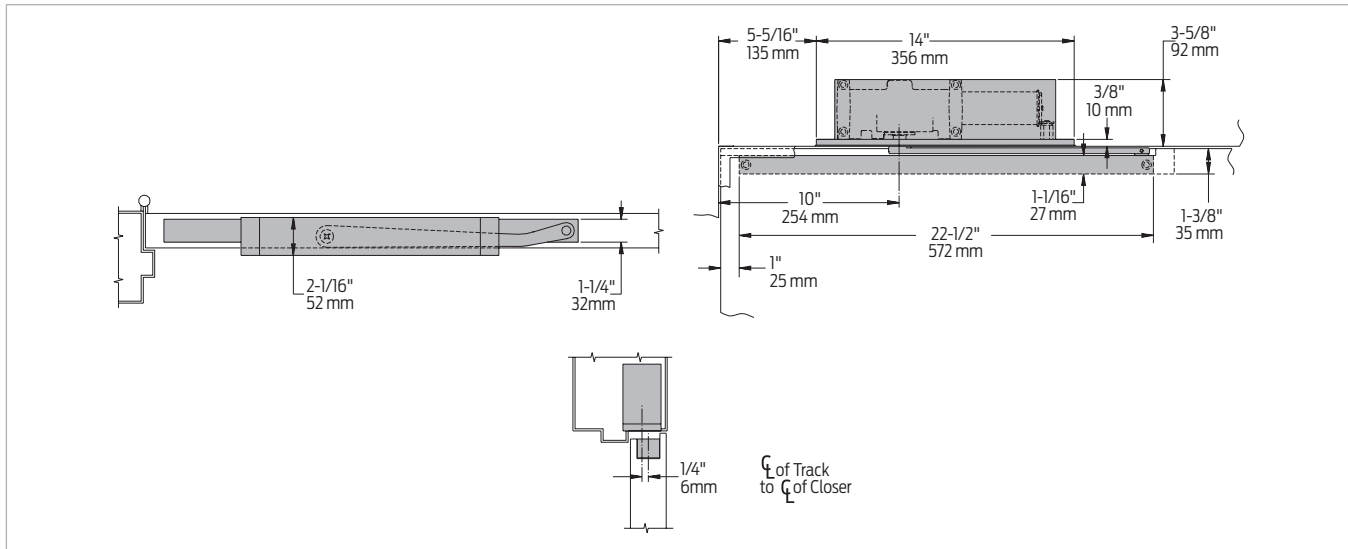
■ Available
■ Not available

Closer available with less than 5.0 lbs. opening force on 36" door.

* Maximum opening/hold open point with standard template. See individual closer series for degrees of opening per installation.

Mounting details

Concealed mounting



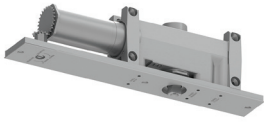
Butt hinges	Should not exceed 5" (127 mm) in width
Auxiliary stop	<ul style="list-style-type: none"> Recommended where a door cannot swing 180° Optional track bumper assembly assists back check in cushioning the opening swing of the door (not intended to replace an auxiliary stop)
Top rail	<ul style="list-style-type: none"> 1 3/8" (35 mm) mortise required With Fire Shield, 1 13/32" (36 mm) mortise required 5/16" (8 mm) cutout required at top of the door, stop face only
Door thickness	1 3/4" (44 mm) minimum
Hollow metal frame	Consult factory for installation instructions
Maximum opening	<ul style="list-style-type: none"> Butt hinge template allows 180°, trim permitting Limited to 110° when optional bumper is installed Adjustable hold open points from 85° to 110°, with Hold Open Track (H) Offset pivot template allows 110°, trim permitting Limited to 95° when optional bumper is installed Adjustable hold open points from 75° to 95°, with Hold Open Track (H) Center pivot template allows 120°, trim permitting Limited to 95° when optional bumper is installed Adjustable hold open points from 75° to 95°, with Hold Open Track (H)

Notes:

- For interior or exterior doors
- Single acting cylinder in head frame
- Concealed arm and track in door top rail

Accessories

Cylinders



**2011(3)(4)(5)(6)-3071
Cast iron cylinder assembly
with mounting plate (CYL)**

- Handed
- With mounting plate
- Standard

Arms



**2010-3077T
Standard Arm (STDTRKARM)**

- Handed
- Track roller not included with arm

Tracks



**2010-3038
Standard Track (STDTRK)**

- Non-handed
- Non hold open
- Will accept hold open clip and/or bumper assembly
- Standard



**2010-3038B
Track with Bumper (BUMP)**

- Non-handed
- Non hold open
- Will accept hold open clip
- Optional



**2010-3038H
Hold Open Track (H)**

- Non-handed
- Will accept bumper assembly
- Optional



**2010-3038HB
Hold Open Track with
Bumper (HBMP)**

- Non-handed
- Optional

Installation accessories



**2010-420
Fire Shield**

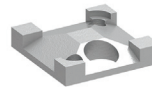
- 22 gauge steel liner mounts in the track mortise of the door's top rail for 20 minute labeled wood doors



**2010-169
Track Bumper**

- Mounts in track to assist back check
- Limits maximum opening
- Consists of bumper, bumper post and mounting screw

Note: Track bumper does not replace auxiliary stop.



**2010-3054
Hold Open Clip**

- Mounts in track to provide hold open function
- Hold open point controlled by clip location
- Requires 2010-3034H



**2010-3034
Track Roller**

- Quiet, low friction roller assembly
- Shoulder dimension "X" = 1/16" (2 mm)



**2010-3034H
Hold Open Track Roller**

- Quiet, low friction roller assembly
- Shoulder dimension "X" = 1/16" (2 mm)