

FALCON®

Cross bar

Exit devices

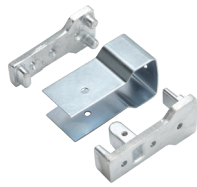


Accessories

Mullions



RM 70



Mullion Brackets



525 Mullion Stabilizer

RM 70 Removable mullion

RM 70 for use with 2090 Series comes complete with adjustable mortised strikes and security clips. Compatible with doors 7' to 10' and for use with stiles as narrow as 1 3/4". Made of aluminum, they are available in anodized aluminum or bronze finishes. Mullion is 3 1/2" deep, 1" wide on door side, and 1 5/8" at the widest point.

Mullion strikes



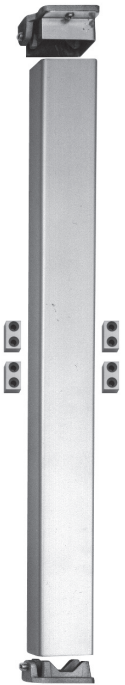
STK70

Adjustable mortise strikes (pair).

2 3/8" tall

1 7/16" wide

1" thick



F-4023 Shown

Removable mullion

- The 2923, (F)4023 and KR(F)-4023 steel mullions are for use with the XX-R devices on double door openings. Advantage: Increased security and tighter closure. Minimizes door warpage and sag. Regulates the flow of in-and-out traffic.
- Falcon removable mullions are easily removed and reinstalled for full width access.
- Rim devices are used on both leaves, attaining a perfectly symmetrical opening.
- The mullion assembly consists of a mullion, top and bottom mounting brackets and a screw pack. Soffit adapters are available for use with either the 2923 or the 4023 mullion. Please see Price Book for ordering information.
- The (F)4023 and KR(F)-4023 fire-rated mullion also includes four stabilizer blocks as required for labeled installations.
- Strikes are not furnished with the mullion. Please see page 15 for strike information.
- Mullions may be cut on the job for doors under stock lengths.
- KR Mullions require 1 1/4" mortise cylinders with standard "A" cam.

Mullion features

- Mullion fittings – ductile iron.
- (F)4023, cylinder removable mullions KR(F)-4023 - 2" x 3" x height.
- 2923 mullion – 1 1/2" x 2 1/2" x height.
- Prime coat only.
- 7' or 8' door opening standard, other door openings as specified.

Strikes

For (F) XX-R rim devices (center latching)



565
Adjustable surface mounted for use with blade or applied stops.



F570 F490

F570/F490
Adjustable strike.

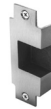


571/571A
Used on inactive leaf for device on active leaf of pair of doors without removable mullion. 571 keeps 2 7/16" backset. 571A is trimmer and projects less into opening.

For all mortise lock devices (F) XX-M



1279
To ASA dimensions. Closed strike used on single doors and on fire exit hardware doors with coordinator.

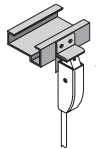


F1280
Open back strike used on pairs of 1 3/4" doors without astragal or coordinator. To basic ASA dimensions and can be used on stock hollow metal doors. Use 1280A for 2 1/4" doors. F-1280 B label (1 1/2 hr.) stainless steel strike available.



4188
Top strike for (F)XX-C

For (F) XX surface vertical rod and concealed vertical rod devices



4215
Angle bracket for flush transom applications. Does not require elimination of latch retention feature.



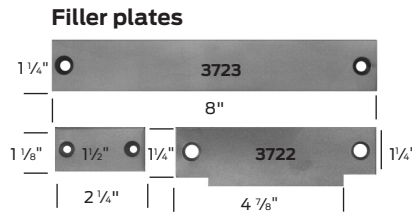
3788
Standard top of (F) XX-V.



4155
4155 bottom strike for use with (F)XX-V and (F)XX-C



2130
(F)XX-V standard bottom strike for grouting into concrete or masonry floors. Also used with (F)XX-C



3721/3722/3723
Steel filler plates
3721 Cylindrical lock front filler
3722 ASA Strike filler
— set no. SC for 161 cutout
3723 Mortise lock front filler
3722 ASA Strike filler
— set no. SM for 86 cutout

Surface vertical extension rods



Extension rods are available in 12", 24" and 36" lengths in all finishes. Both ends tapped and all-thread included as connector.

Concealed extension rods



Extension rods are available in 12", 24" and 36". Both ends have pressed-in, threaded inserts.

Accessories

Strikes

Concealed vertical rod



PB48

Top strike for 1990 devices.
Packed with three 0.050" thick shims.
1 1/16" square
7/16" projection

Rim



STK45

Strike for inactive leaf,
pair of doors with
2090 devices.
3 1/4" tall
1 5/16" wide
1/4" thick



SD35

Strike for 1/8" x 1/2"
blade stop, 2090
device.
1 3/4" tall
1 3/4" wide
1/2" thick



SD36

Strike for all stops,
2090 device.
1 3/4" tall
1 3/4" wide
1/2" thick

Pull



9970

Can be used with all
devices.
9 1/4" center to center
2 7/8" projection
1 3/4" clearance

Cylinders

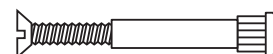
- Cylinders for XX-R and XX-V Series devices with cylinder operation are rim cylinders with either horizontal or vertical tailpiece.
- Cylinders for XX-C and, XX-M and Series devices are mortise cylinders with standard thread (1 5/32" - 32). The standard cams furnished with most manufacturers mortise cylinders will operate mortise locks, as well as concealed Delta trim operators for XX-C devices. (Cams measure approximately 1" overall and 5/16" wide at tip.) Exception: Concealed C & NL require cam B250-295.
- Cylinder supplied only when specified.
- 1 1/4" long with standard cam and "G" keyway only.
On Delta C trim for vertical and concealed vertical C and NL functions 1 1/8" - 1 1/4" long cylinder by blocking ring required with cam B250-295.
- Cylinders available keyed and keyed different.
- XX-M devices using 811K, 812L or 816L trim require a 1 1/2" cylinder.

Sex Bolts

Sex bolts are available in lengths (under the head) of 12 1/32". Screws to fit are available in 3/4" and 2" lengths to cover a wide range of door thicknesses.

B-2729 (#10-24 Thread)

B-4122 (1/4-20 Thread)



Trim designs

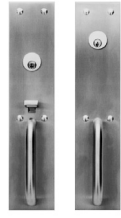
Vanguard (820)



820 TP 820 NL

Escutcheon: 2 3/4" x 16 1/8"
 Grip: 6 1/4" C-C
 Projection: 2 1/16"
 Brass, bronze, stainless steel and aluminum

Apollo (810)



810 TP 810 NL

Pull: 5 1/2" OC
 Escutcheon: 3 1/4" x 15"
 Projection: 2 1/4"
 Brass, bronze, stainless steel and aluminum

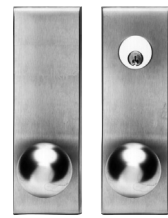
Athena (815)



815 NL 815 TP

Grip Overall: 9 1/16"
 Width: 1 5/8"
 Pull: 6 1/4" C-C
 Projection: 2 1/4"
 Brass, bronze, plated and aluminum

811K



811K-DT 811K
 811K-BE

Round Ball Knob
 Escutcheon: 2 3/4" x 9 3/4"
 Projection: 3 3/8"
 Brass, bronze and stainless steel

812L

Dane



L/DT
 L-BE

Dane



700 Series projection: 2 7/8"
 800 Series projection: 2 13/16"

Sutro



700 Series projection: 3 1/8"
 800 Series projection: 3 13/16"

Quantum



700 Series projection: 3 1/8"
 800 Series projection: 3 1/2"

Avalon



700 Series projection: 3 1/8"
 800 Series projection: 3 1/8"

816L

Vandal resistant



- Heavy duty, vandal resistant
- Trim operates device even in the "broken" position
- Breaks away in either direction (up or down), no internal shear
- Retrofits all existing Falcon lever or knob trims without additional door prep
- Works with all electric lock and unlock functions
- Works with rim, surface vertical devices and mortise
- Handed

Lever: 4 5/8" Escutcheon: 2 3/4" x 9 3/4" (specify handing) brass, bronze and stainless finishes.

- Dane, Quantum and Sutro lever trim return to within 1/2" of door.

718 Delta (for XX concealed only)



718 TP 718 DT 718 C 718 NL

For active trim when locking is not required specify (BE) blank escutcheon.
 Escutcheon: 8 1/8" x 1 7/8"
 Overall length: 14 1/16"
 Specify handing

717



717DT

Escutcheon:
 8 1/8" x 1 7/8"

712



*Dane shown.

712L Control

Escutcheon:
 8 1/8" x 1 7/8"

711



711K

Escutcheon:
 8 1/8" x 1 7/8"
 Projection: 3 13/16"