



DUST PROOF STRIKES



1570



1572



1573

NUMBER	DIMENSIONS	ANSI A156.16	MATERIAL
1570	2 7/8" x 2 1/4"	L24021	Cast Brass
1572	15/16" Dia. x 2" Depth	L24021	Cast Brass
1573	2 7/8" x 2 1/4"	L24021	Cast Brass

SHELF PACK: 10 Polybagged
FASTENERS: (1570, 1573) 2 ea. #8 x 1" SMS, 2 ea. Plastic Anchor
FEATURE: (1573) Can be locked closed
FINISHES: 605, 612, 613, 625, 626
 (1573) 605, 613, 626

ROLLER LATCHES



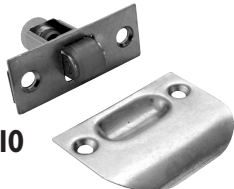
1700



1702



1704



1710

NUMBER	SIZE	ANSI A156.16	MATERIAL
1700	Body: 3 3/8" x 1"	E19091	Cast Brass
	Strike: 1 11/16" x 2 1/4"		
1702	Body: 3 3/8" x 1"	-	Cast Brass
	Strike: 1 1/8" x 2 3/4"		
1704	Body: 3 3/8" x 1"	E19091	Cast Brass
	Strike: 1 1/4" x 4 7/8"		
1710	Body: 2 1/4" x 7/8"	L17802	Cast Brass
	Strike: 2 1/4" x 1 3/4"		

SHELF PACK: 10 Polybagged
FASTENERS: (1700, 1702) 2 ea. #8 x 1" SMS, 2 ea. #8-32 x 3/4" MS, 2 ea. #10 x 1 1/2" SMS
 (1704) 2 ea. #12-24 x 1/2" MS, 2 ea. #12 x 3/4" SMS, 2 ea. #10 x 1 1/2" SMS
 (1710) 4 ea. #8 x 1" SMS
FEATURES: • Solid nylon roller for silent operation
 • Adjustable roller latch
FINISHES: 605, 613, 619, 620, 626