

Detex Corporation, 302 Detex Drive, New Braunfels, Texas 78130-3045
(830)629-2900 / 1-800-729-3839 / Fax (830)620-6711
E-MAIL: detex@detex.com INTERNET: www.detex.com

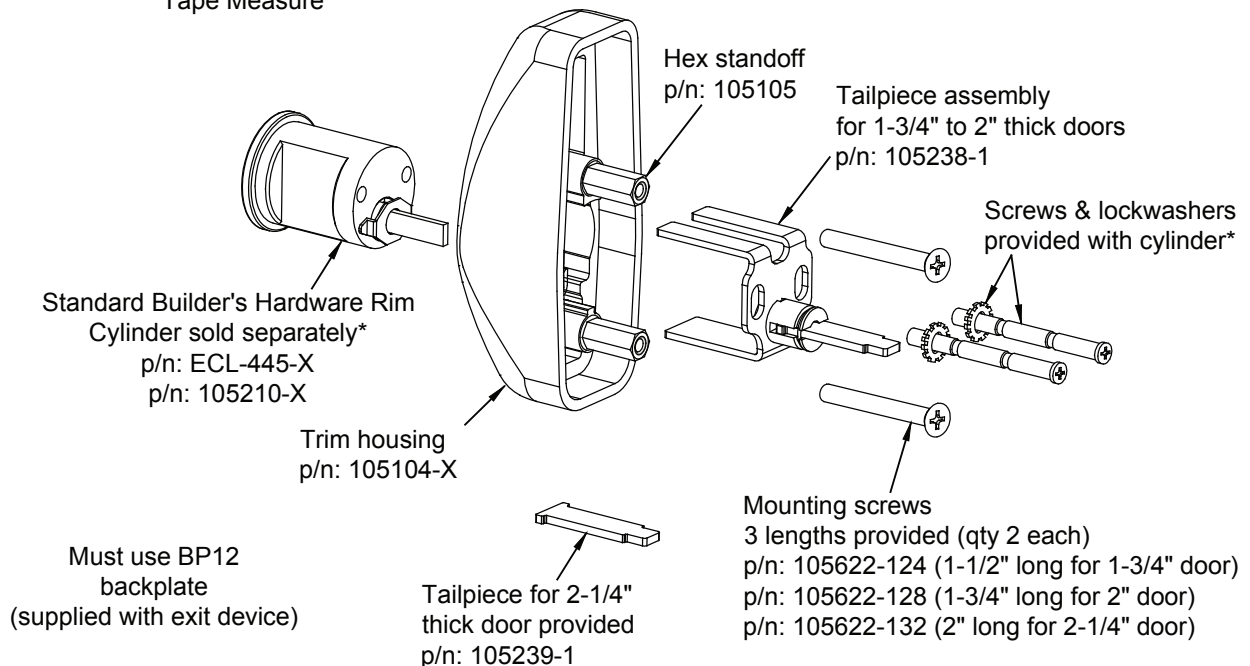
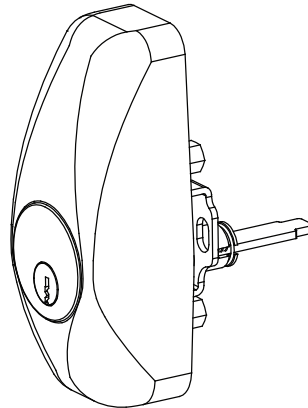
INSTALLATION INSTRUCTIONS FOR 03R ADVANTEX® TRIM FOR NARROW STILE (60 SERIES) CVR APPLICATIONS

ADVANTEX®

03R Trim for 60 Series Concealed Vertical Rod Exit Device 60 / F60 / 61 / F61 / 62 / F62 / 63 / F63 Series Drawing no. 105106

TOOLS AND SUPPLIES

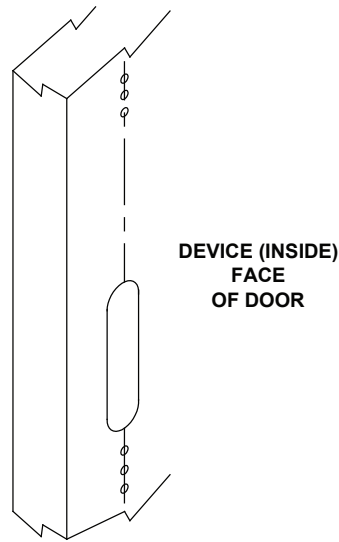
Safety Glasses
(Always put on safety glasses prior to beginning installation of unit)
Pencil
Center Punch
Hammer
Power Drill
1-1/4" Hole Saw
Drill Bit & Tap Set
Screw Driver (Phillips Drive)
Tape Measure



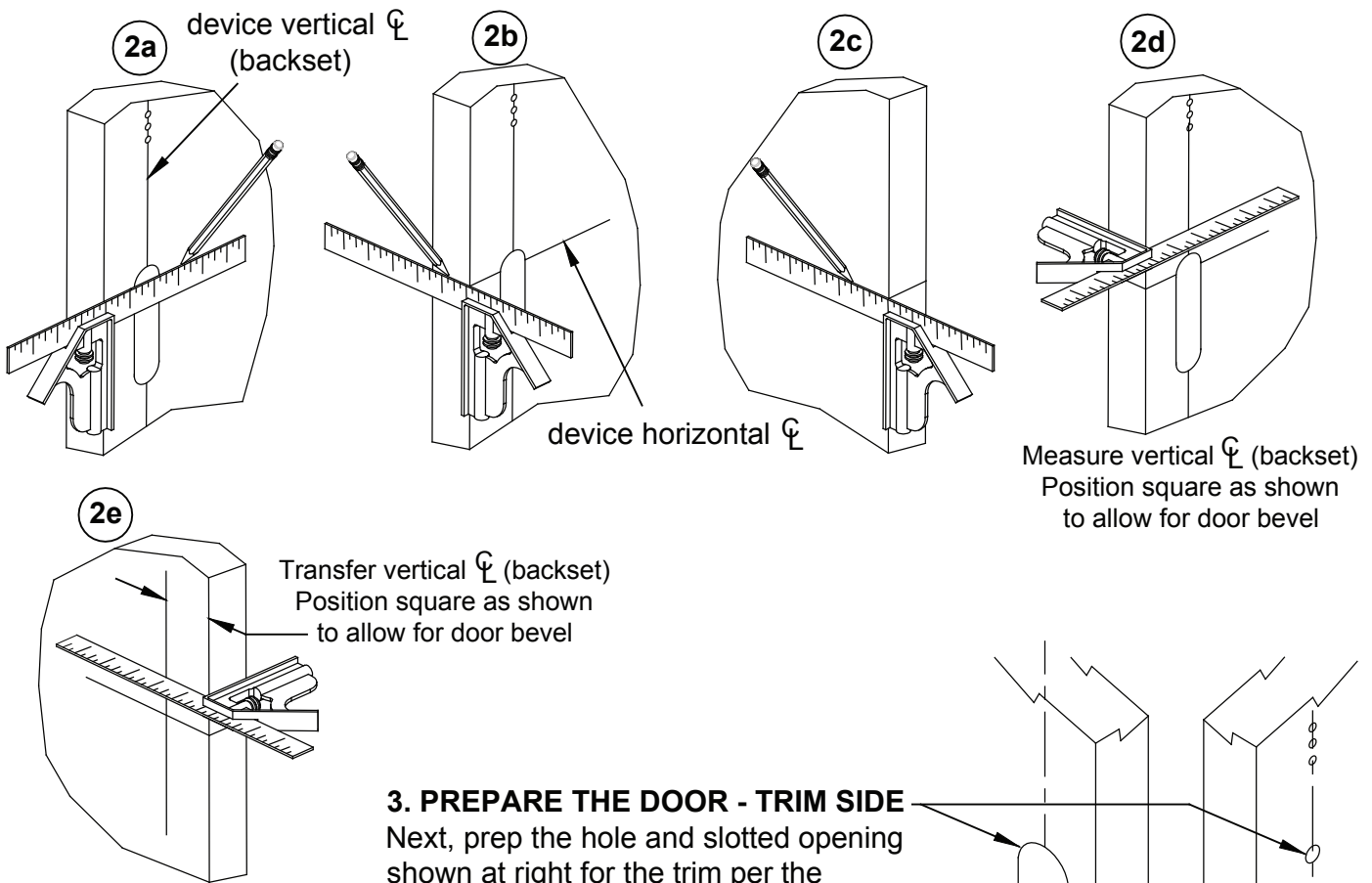
Owner's Copy

1. PREPARE THE DOOR - DEVICE SIDE

If not already done, prep the door per the instructions provided with the exit device.



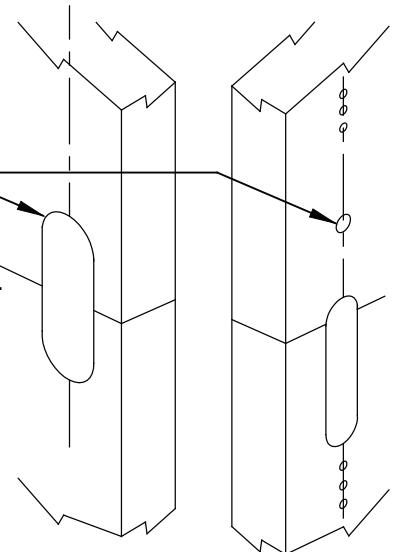
2. TRANSFER DEVICE CENTERLINES TO TRIM SIDE OF DOOR



3. PREPARE THE DOOR - TRIM SIDE

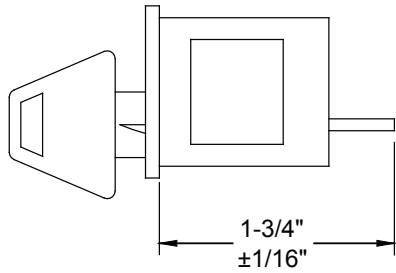
Next, prep the hole and slotted opening shown at right for the trim per the template (p/n 105285) provided with this trim.

(Template also available on Detex website
See template T2314)



4. PREPARING THE CYLINDER:

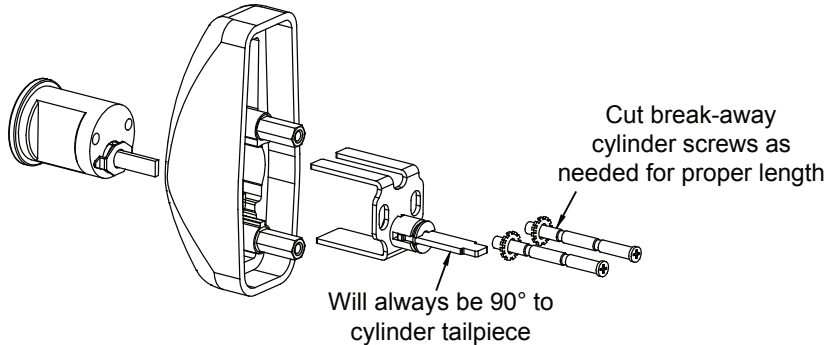
Cut rim cylinder tailpiece as shown below.



5. ASSEMBLE THE TRIM:

Assemble the cylinder (with key removed), trim housing & tailpiece assembly.

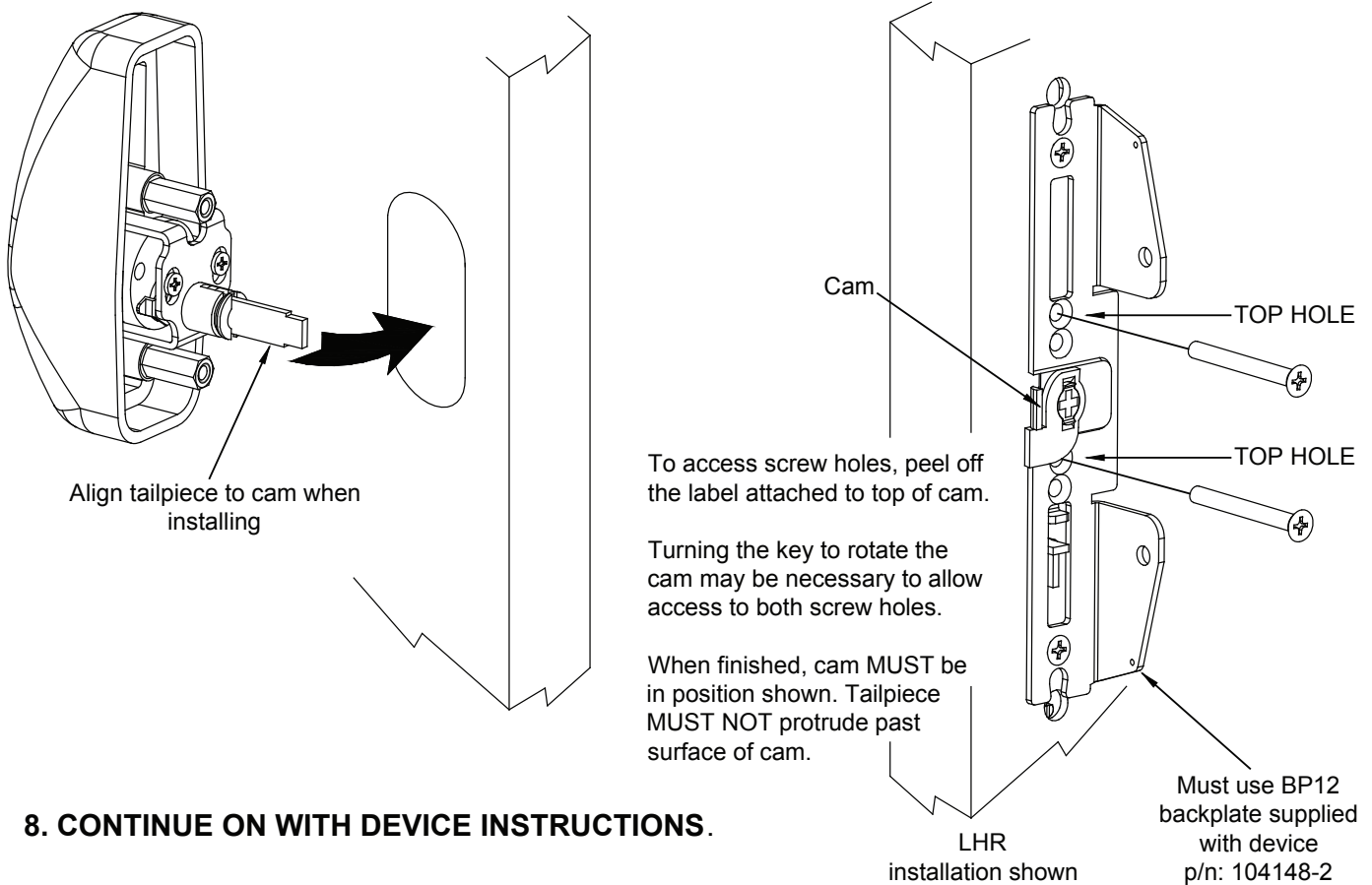
The unit comes assembled with the tailpiece used on 1-3/4 to 2" thick doors. For 2-1/4" thick doors, replace with the longer tailpiece provided (p/n 105239-1).



6. GO BACK AND FOLLOW EXIT DEVICE INSTRUCTION STEPS up to, but not including **ASSEMBLE DEVICE TO DOOR**. Trim must be installed **BEFORE** device is assembled to door.

7. INSTALL TRIM ON DOOR

With the required BP12 backplate secured, use the appropriate length screws in the **TOP HOLE** in each pair of backplate holes above and below the cam (as shown) to install trim.



8. CONTINUE ON WITH DEVICE INSTRUCTIONS.