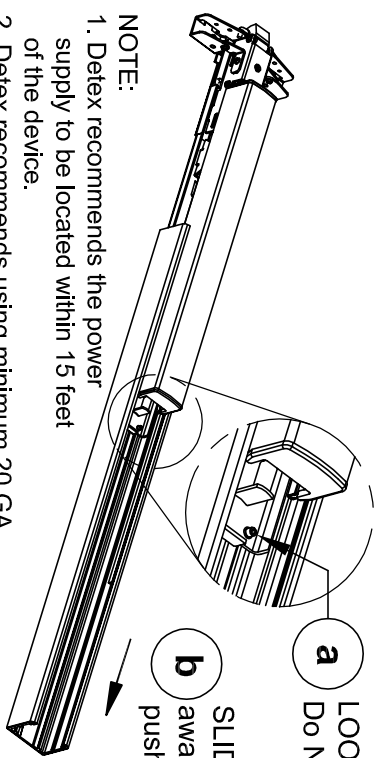


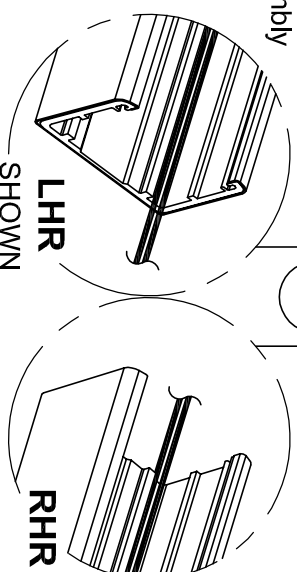
STEP 4: ROUTING WIRES THROUGH DEVICE

Wires can be routed through device or door



a LOOSEN set screw with 3/32 hex wrench.
Do NOT remove.

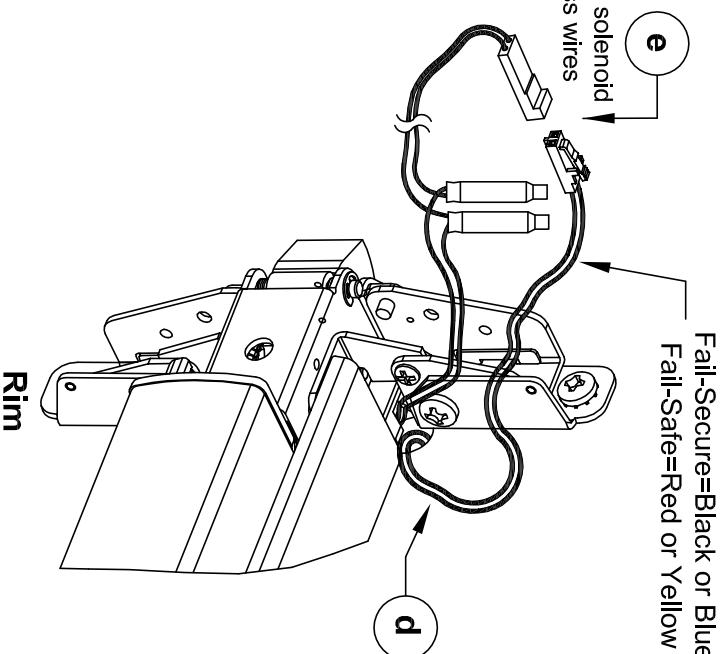
b SLIDE extrusion
away from
pushpad assembly



c ROUTE wires
through extrusion

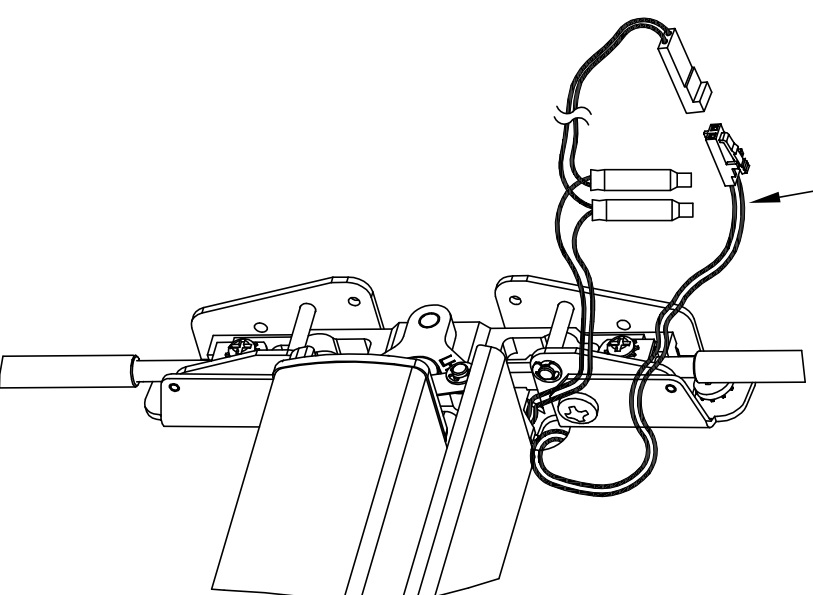
- NOTE:**
1. Detex recommends the power supply to be located within 15 feet of the device.
 2. Detex recommends using minimum 20 GA wire for power.
 3. Current draw: 24VDC = 150 mA
12VDC = 250 mA

e CONNECT solenoid
and harness wires



Fail-Secure=Black or Blue spiral tubing
Fail-Safe=Red or Yellow spiral tubing

Rim



SVR

INSERT excess wires into door
OR
TRIM excess wires

- f** Installation Continuation:
SLIDE extrusion back to pushpad assembly
- g** Tighten set screw with 3/32" hex wrench

Detex Corporation, 302 Detex Drive, New Braunfels, Texas 78130-3045

(830)629-2900 / 1-800-729-3839 / Fax (830)620-6711

E-MAIL: detex@detex.com

INTERNET: www.detex.com

INSTALLATION INSTRUCTIONS FOR "EU2W" LEVER TRIM, 4-1/2" MINIMUM STYLE

ELECTRIC UNLOCK: NOTE: Trim is not field reversible.

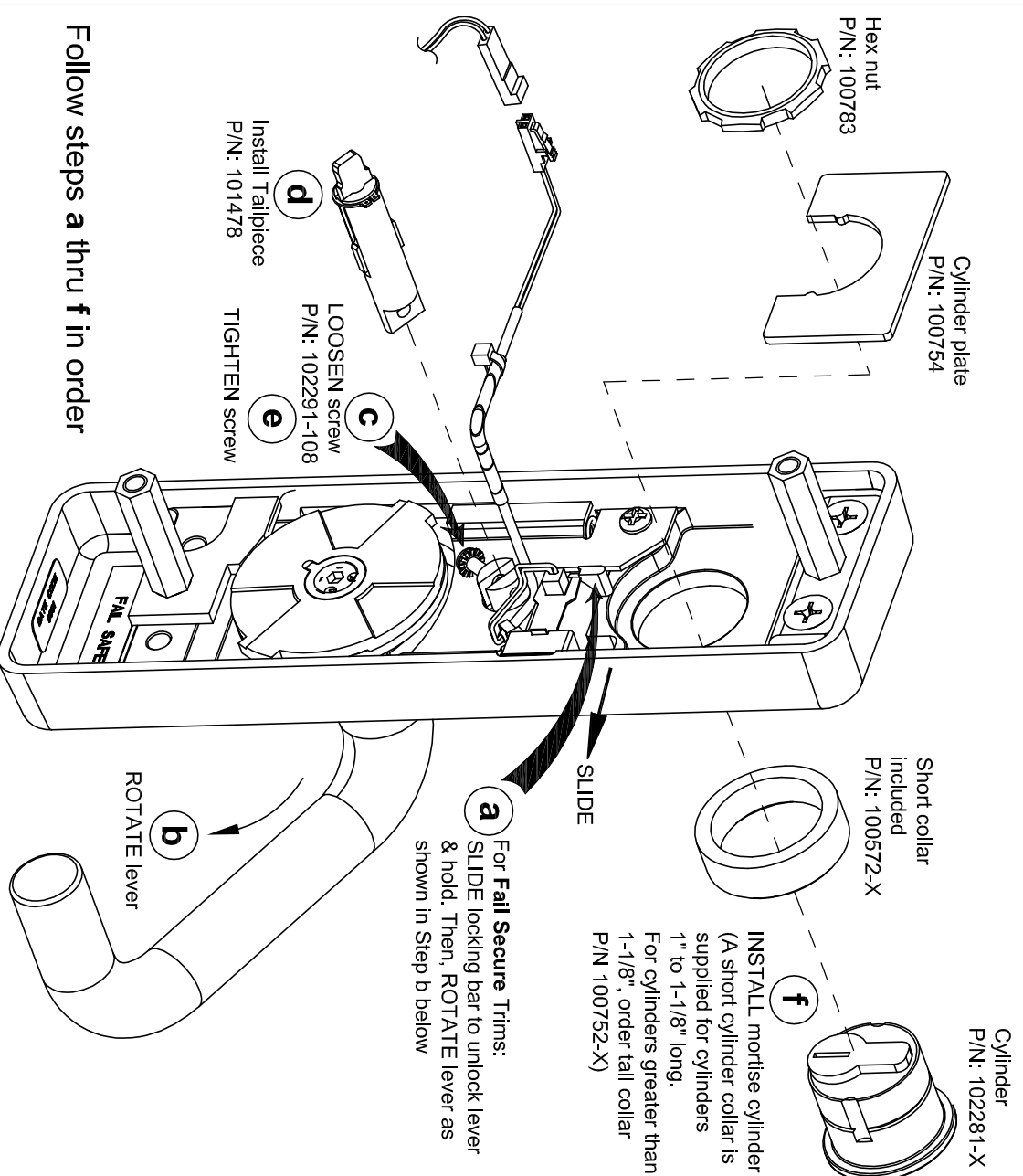
A DC power source is connected across the brown wires to power the internal solenoid. The solenoid connection is not polarized. The applied voltage will unlock for Fail-Secure and lock for Fail-Safe.

Units are color coded as follows:

| | |
|--|--------------|
| 24 VDC Fail-Secure (Black spiral tubing) | p/n 104209-1 |
| 24 VDC Fail-Safe (Red spiral tubing) | p/n 104209-2 |
| 12 VDC Fail-Secure (Blue spiral tubing) | p/n 104209-3 |
| 12 VDC Fail-Safe (Yellow spiral tubing) | p/n 104209-4 |

STEP 1: PREP TRIM DEVICE Install tailpiece for RIM or SVR

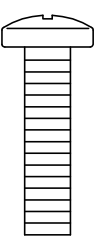
NOTE: Mortise cylinder NOT supplied with trim, but can be ordered separately.



Follow steps a thru f in order

STEP 2a: PREP DOOR (Rim & SVR)

Mark & Drill holes



1/4-20 x 1"



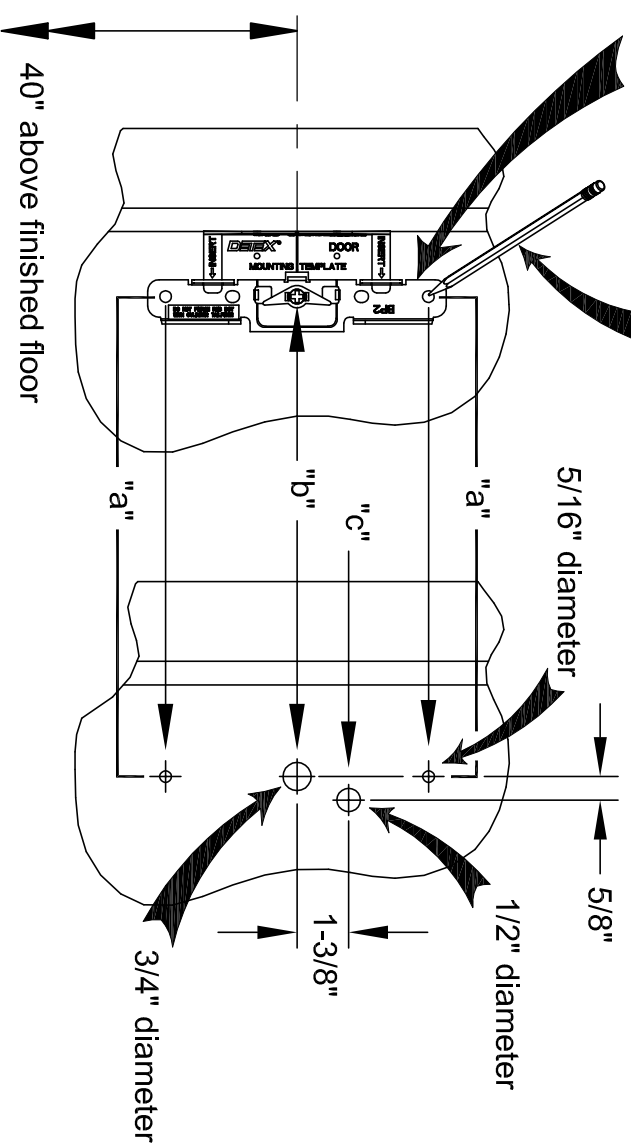
1/4
Lock washer

- NOTES:**
- 1) For a retrofit application, remove device before installing new trim.
 - 2) LHR installation shown (Reverse all steps for RHR).

Backplate
P/N: 100696-1

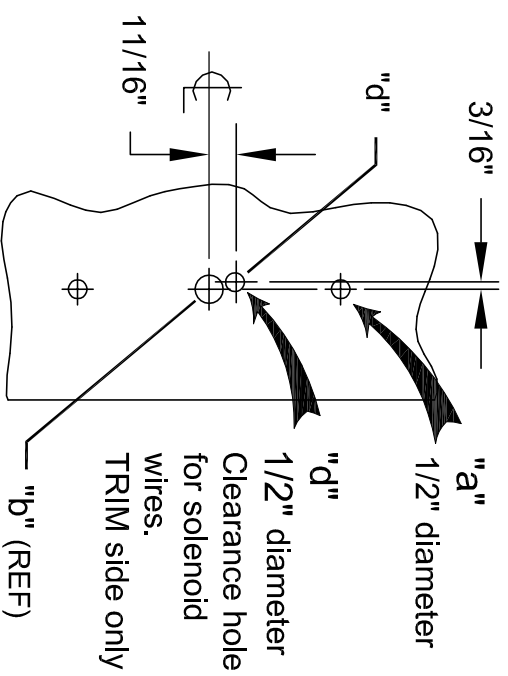
MARK HOLES

DRILL HOLES



| (Metal Doors Only) | | | | |
|----------------------|-------------------|----------------------------|--------------------------|------------------------|
| Holes "a" | Hole "b" | Hole "c" | Hole "d" | |
| Device Side 5/16" | Trim Side 1/2" | Trim & Device Side 3/4" | Device Side ONLY 1/2" | Trim Side ONLY 1/2" |

DRILL HOLES

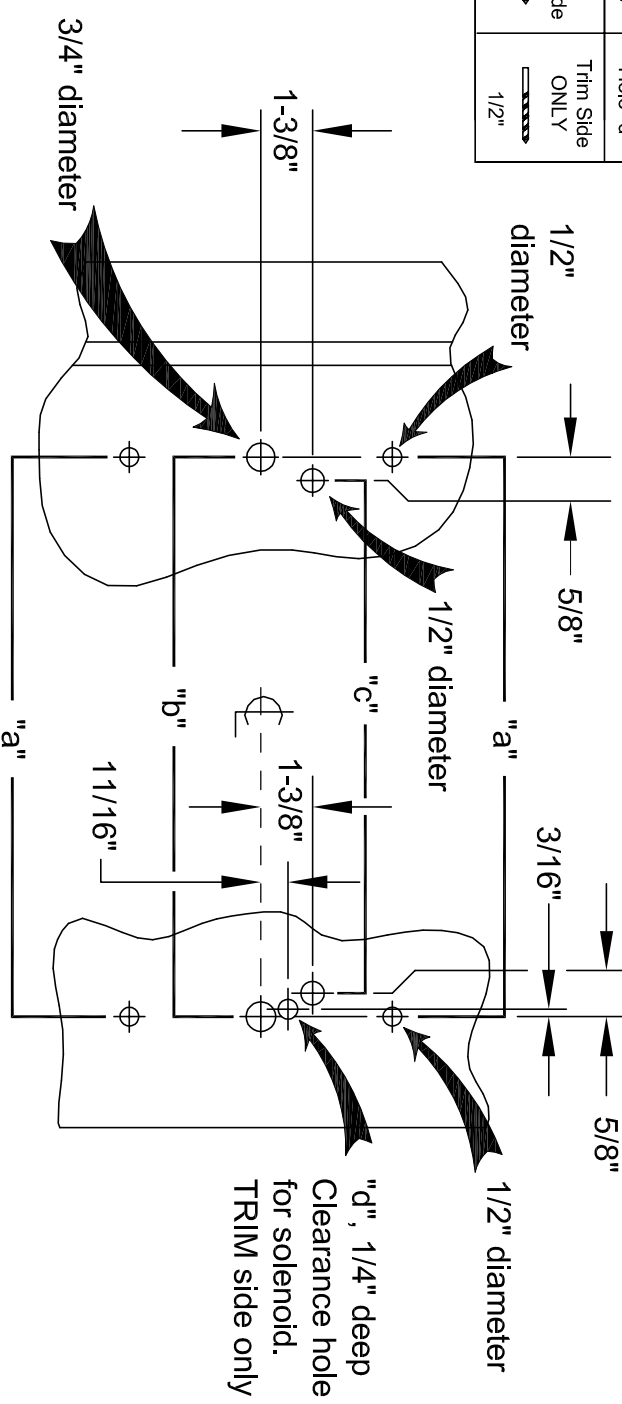


(Wood Doors Only)

| | | | |
|----------------------------|----------------------------|----------------------------|------------------------|
| Holes "a" | Hole "b" | Hole "c" | Hole "d" |
| Trim & Device Side 1/2" | Trim & Device Side 3/4" | Trim & Device Side 1/2" | Trim Side ONLY 1/2" |

DRILL HOLES

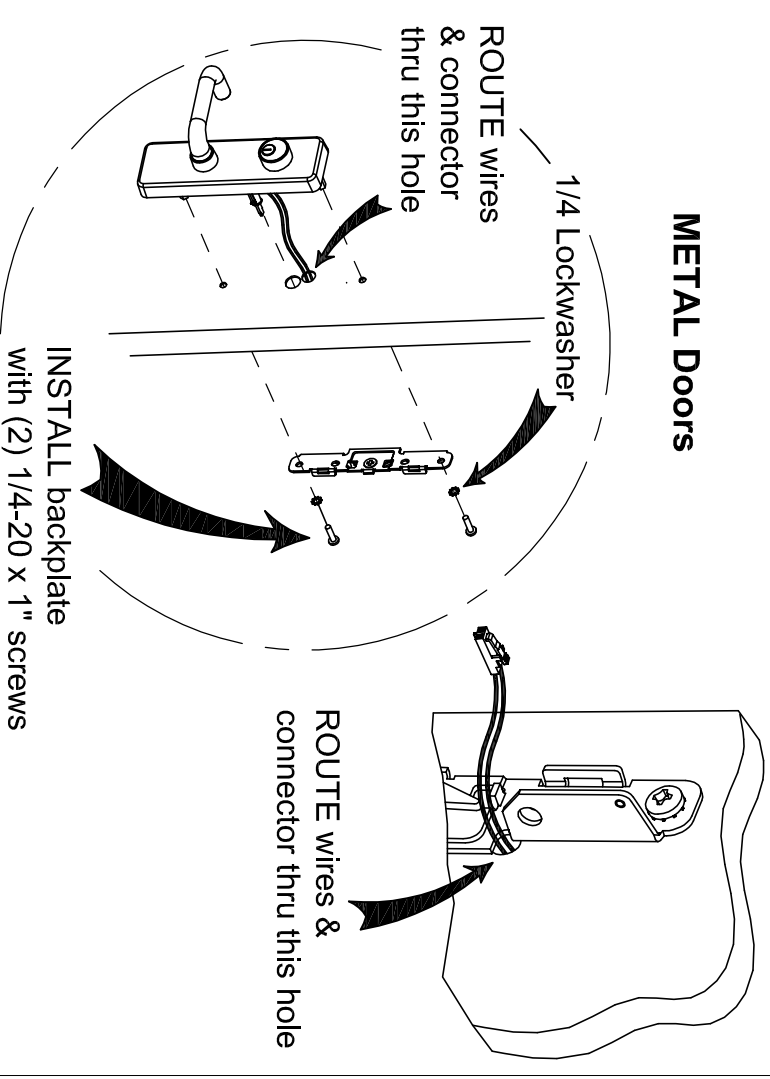
DRILL HOLES



STEP 3a: INSTALL TRIM DEVICE (Rim & SVR)

Install TRIM for Rim & SVR Device

METAL Doors



WOOD Doors

