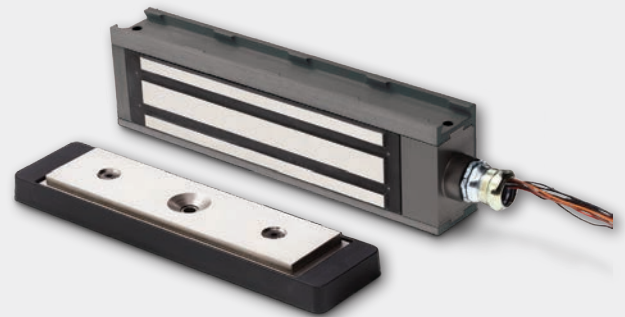




M490G

Electromagnetic gate lock



Overview

The Schlage M490G is a weather resistant electromagnetic gate lock with 1500 lbs of holding force designed for use on all types of sliding and swinging gates. As a high security magnetic lock, it can accommodate misalignment problems while supplying superior holding force.

A 1/2" compression connector is provided for installation of 1/2" EMT conduit, ensuring protection of hook-up wiring from weather and vandalism. Heavy-duty plating resists corrosion of mating surfaces, providing a low maintenance locking device.

A modified top jamb mounting bracket allows a single M490G to be mounted in a variety of positions. The M490G gate lock may be mounted to any gate frame or post. Special brackets may be required to adapt the lock to a particular frame or post. It is important that the lock is mounted so that the armature pulls straight back from the magnet face.

The M490G can be field configured for either 12 or 24 VDC operation. Magnetic Bond Sensor (MBS) and Gate Status Monitor (DPS) are standard.

Features and benefits

- 1500 lb. hold force rating
- Magnetic bond sensor (MBS) and gate status monitor (DPS)
- Field selectable 12 or 24VDC operation
- Built-in voltage spike suppressor
- Electroless nickel plated finish
- Corrosion and weather resistant for exterior use
- Universal mounting brackets for swinging or sliding gate applications
- 1/2" EMT compression fitting protects hookup wires from weather and vandalism
- Two foot wire leads
- Accommodates gate misalignment
- No moving parts - low maintenance
- Limited lifetime warranty on magnetic coil assembly
- Certified to handle salt spray & freezing outdoor temperatures

Standard features

M490G

- Magnetic Bond Sensor (MBS) monitors the strength of the bond between the lock and armature so you know the door is secure
- Door Position Switch (DPS) monitors whether the door is open or closed
- Universal Mounting Brackets for swinging or sliding gate applications
- Built-in voltage spike suppression
- 1/2" EMT compression fitting
- Special corrosion resistant plating

M490G electromagnetic gate lock specifications

Specifications	M490G
Holding force	Meets or exceeds BHMA standard of 1500 lbs
Input voltage (field selectable)	12/24 VDC
Current draw (amps standard unit)	.65A @ 12 VDC .35A @ 24 VDC
Height	3"
Length	11"
Depth	1 3/4"
Weight (approximate)	14 lbs
Certifications	ANSI/BHMA 156.23 Outdoor rated
Temperature	-31° to 151° F (-35° to 66° C)
Wire gauge	14-22 AWG

Filler plates

Length	11"
Width x Height	Plate no.
1 1/4" x 1/8"	49G1F
1 1/4" x 1/4"	49G2F
1 1/4" x 3/8"	49G3F
1 1/4" x 1/2"	49G4F
1 1/4" x 5/8"	49G5F
1 1/4" x 3/4"	49G6F
3/4" x 1/2"	49G7F
3/4" x 5/8"	49G8F

Angle brackets

Length	11"
Width x Height	Bracket no.
1" x 1"	49G1A
1 1/2" x 1"	49G2A
1 1/2" x 1 1/2"	49G3A
1 1/2" x 2"	49G4A
1 1/2" x 2 1/2"	49G5A

Allegion, the Allegion logo, Schlage, and the Schlage logo are trademarks of Allegion plc, its subsidiaries and/or affiliates in the United States and other countries. All other trademarks are the property of their respective owners.

About Allegion

Allegion (NYSE: ALLE) is a global pioneer in safety and security, with leading brands like CISA®, Interflex®, LCN®, Schlage® and Von Duprin®. Focusing on security around the door and adjacent areas, Allegion produces a range of solutions for homes, businesses, schools and other institutions. Allegion is a \$2 billion company, with products sold in almost 130 countries. For more, visit www.allegion.com.

aptiQ ■ LCN ■ SCHLAGE ■ STEELCRAFT ■ VON DUPRIN



© 2016 Allegion
004158, Rev. 04/16
www.allegion.com/us