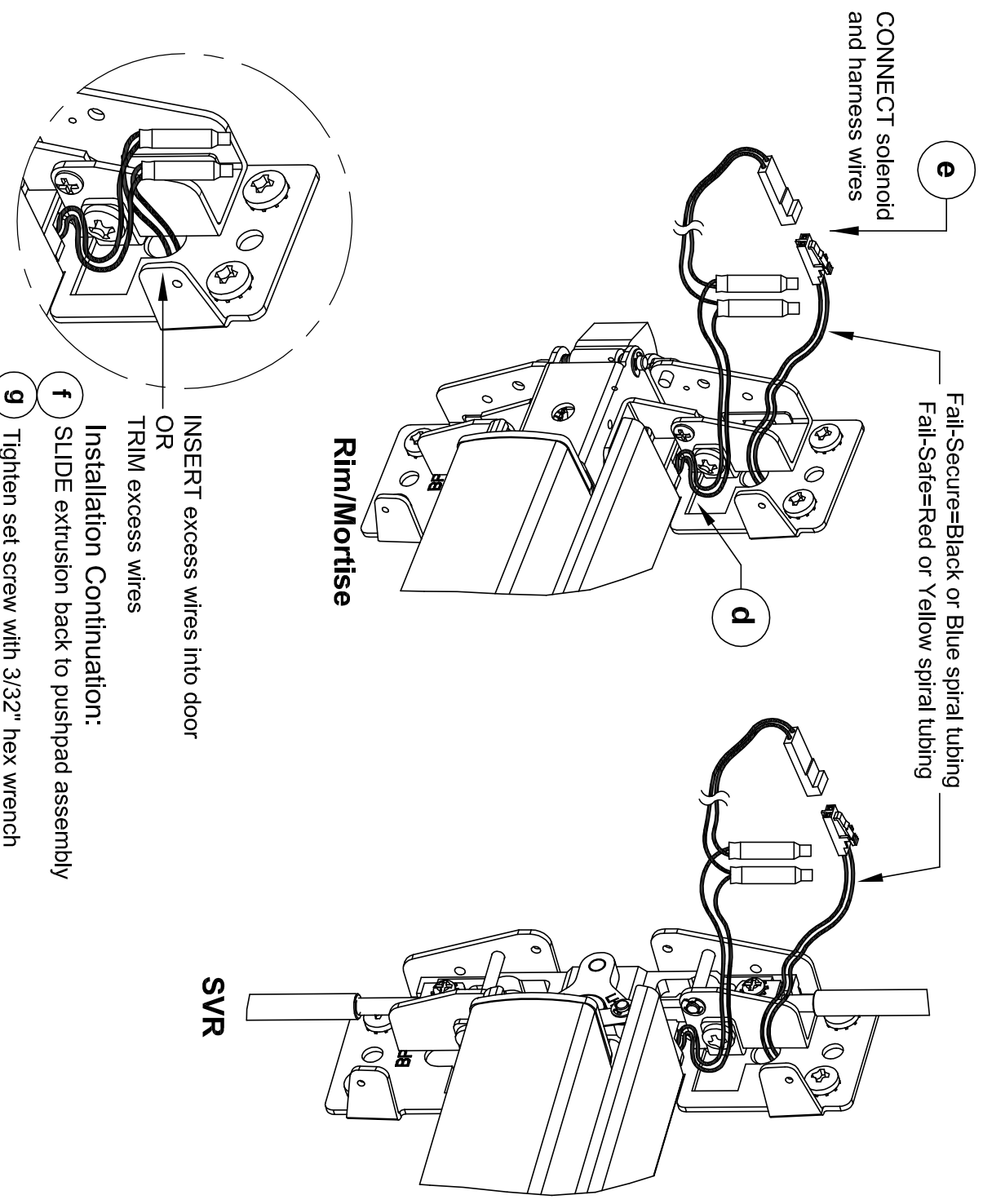
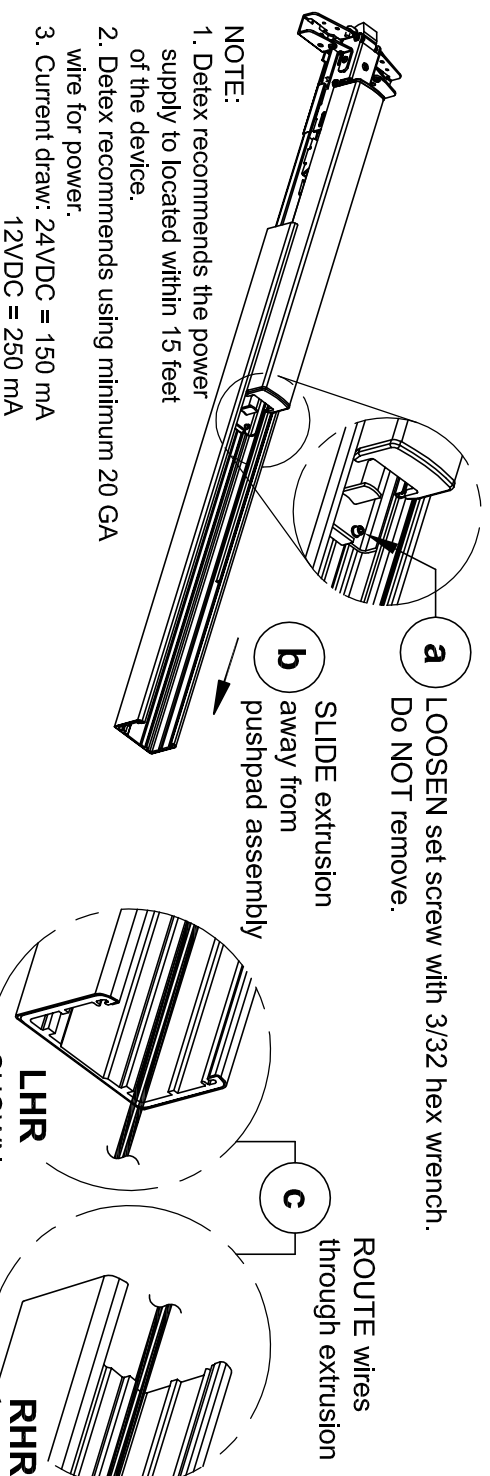


## STEP 4: ROUTING WIRES THROUGH DEVICE

Wires can be routed through device or door



Detex Corporation, 302 Detex Drive, New Braunfels, Texas 78130-3045  
(830)629-2900 / 1-800-729-3839 / Fax (830)620-6711  
E-MAIL: [detex@detex.com](mailto:detex@detex.com) INTERNET: [www.detex.com](http://www.detex.com)

### INSTALLATION INSTRUCTIONS FOR "EU" LEVER TRIM

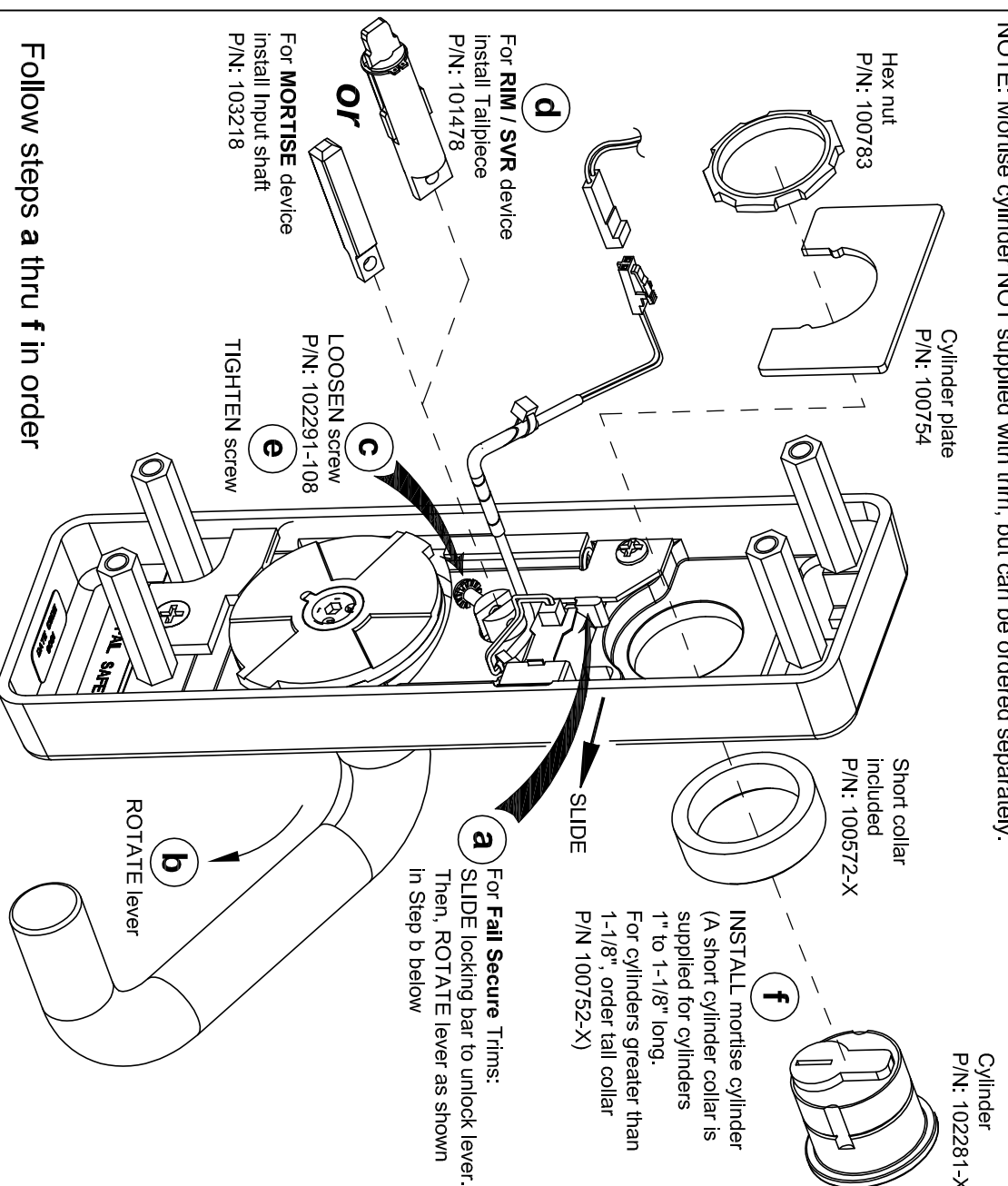
**ELECTRIC UNLOCK:**  
A DC power source is connected across the brown wires to power the internal solenoid. The solenoid connection is not polarized. The applied voltage will unlock for Fail-Secure and lock for Fail-Safe. Units are color coded as follows:

24 VDC Fail-Secure (Black spiral tubing)	p/n 104209-1
24 VDC Fail-Safe (Red spiral tubing)	p/n 104209-2
12 VDC Fail-Secure (Blue spiral tubing)	p/n 104209-3
12 VDC Fail-Safe (Yellow spiral tubing)	p/n 104209-4

## STEP 1: PREP TRIM DEVICE

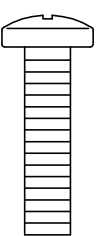
### Install tailpiece for RIM, SVR or input shaft for MORTISE

**NOTE:** Mortise cylinder NOT supplied with trim, but can be ordered separately.

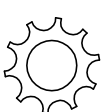


## STEP 2a: PREP DOOR (Rim & SVR)

### Mark & Drill holes



1/4-20 x 1"



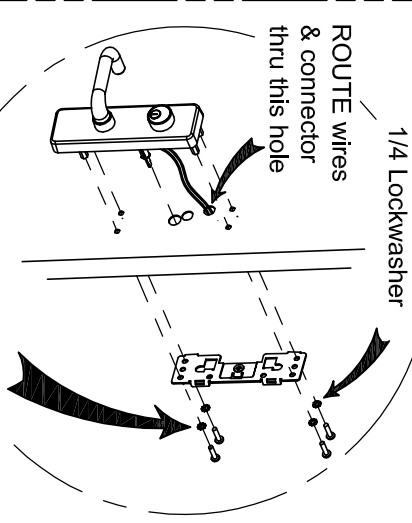
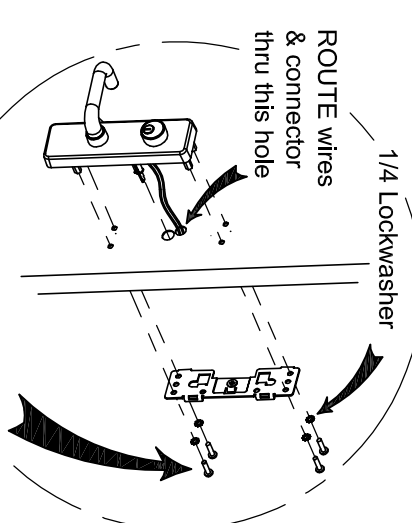
1/4  
Lock washer

## STEP 3a: INSTALL TRIM DEVICE (Rim & SVR)

### Install TRIM for Rim & SVR Device

#### METAL Doors

#### WOOD Doors



NOTES:  
1) For a retrofit application, remove lock and device before installing new trim.  
2) LHR installation shown (Reverse all steps for RHR).

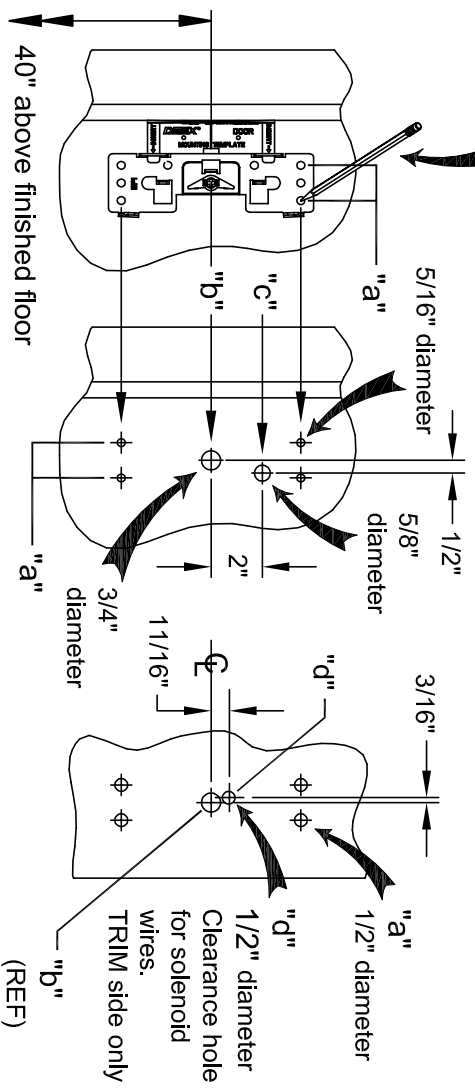
(Metal Doors Only)				
Holes "a"	Hole "b"	Hole "c"	Hole "d"	

(Wood Doors Only)				
Holes "a"	Hole "b"	Hole "c"	Hole "d"	

### MARK HOLES

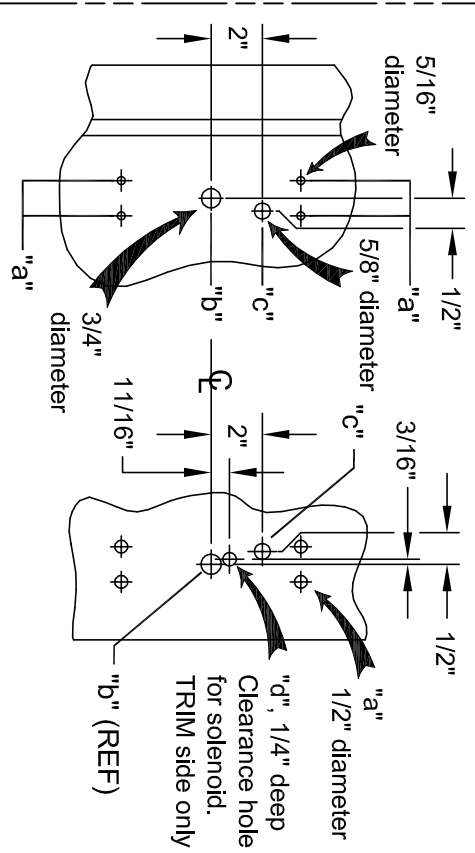
#### DRILL HOLES Device Side

#### DRILL HOLES Trim Side



#### DRILL HOLES Device Side

#### DRILL HOLES Trim Side



## STEP 2b: PREP DOOR (Mortise)

Use plastic template to mark and drill TRIM holes

### MARK HOLES

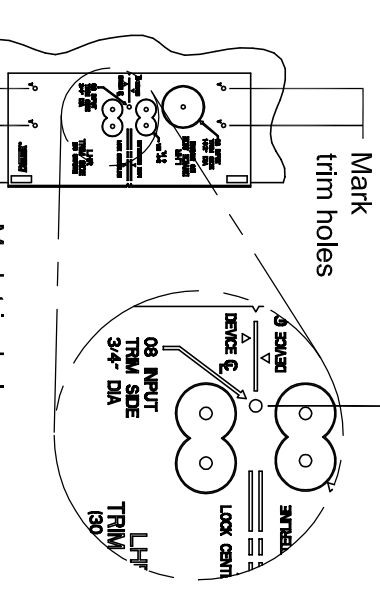
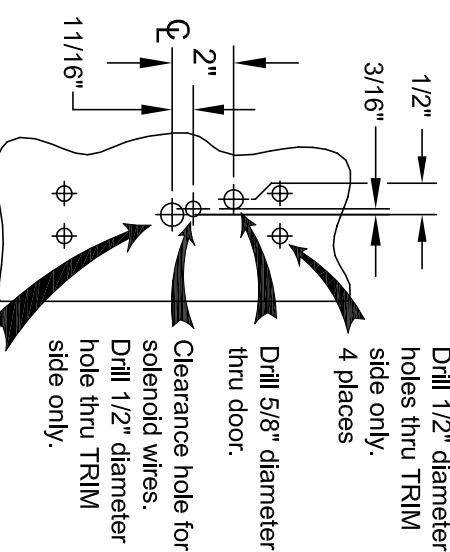
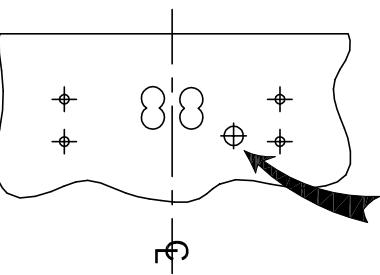
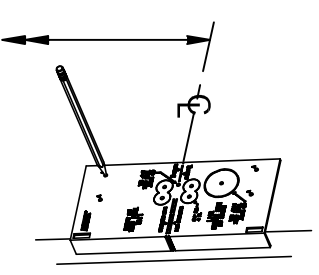
#### DRILL HOLE Device Side

#### DRILL HOLES Trim Side

Mark centerline for trim 40" above finished floor

5/8" diameter

Drill 1/2" diameter holes thru TRIM side only.  
4 places



Mark trim input hole

Mark trim holes

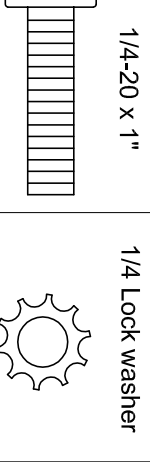
Mark trim holes

## STEP 3b: INSTALL TRIM DEVICE (Mortise)

### Install TRIM for Mortise Device

NOTE:  
1) Mortise lock NOT supplied with TRIM device.

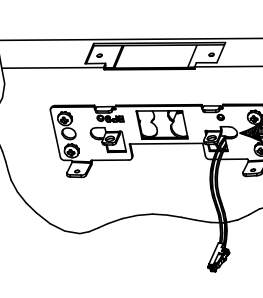
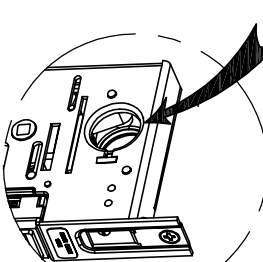
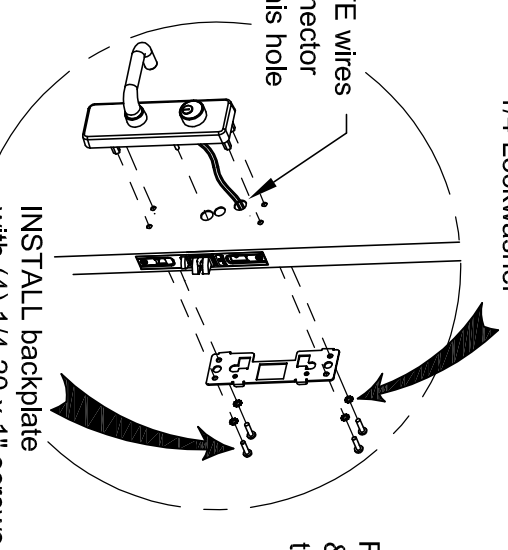
1/4 Lockwasher



ROUTE wires & connector thru this hole

Route solenoid wires & connector thru this hole

ROUTE wires & connector thru this hole



INSTALL backplate with (4) 1/4-20 x 1" screws

TRIM INSTALLATION COMPLETE

Continue installation using device instructions.

103175